

## Anti-Beta-Actin Polyclonal Antibody

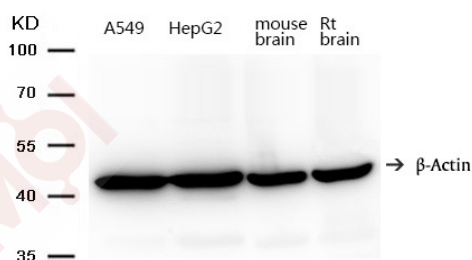
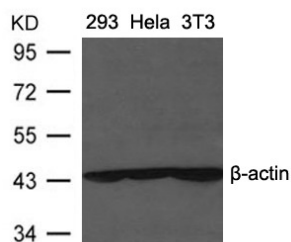
### Product Details

Ig Type:	IgG
Reactivity:	Human,Mouse,Rat
Conjugation:	Unconjugated

### Applications

#### Verified Activity:

1. Western blot analysis of extracts from 293, HeLa and 3T3 cells using  $\beta$ -actin Antibody TMAC-04333.
2. Western blot analysis of extracts from A549, HepG2, mouse brain and rat brain using  $\beta$ -actin Antibody TMAC-04333.



Application:	WB
Recommended	WB: 1:5000-10000

### Properties

Shipping:	Shipping with blue ice.
-----------	-------------------------

### Antigen Details

Immunogen:	Peptide sequence around aa6-10(A-A-L-V-V)derived from Human beta-actin
Antigen Species:	human
Uniprot ID:	P60709
Synonyms:	Beta-Actin;ACTB;Actin Cytoplasmic 1; $\beta$ -Actin Protein; $\beta$ -actin

### Research Background

Actins are highly conserved proteins that are involved in various types of cell motility and are ubiquitously expressed in all eukaryotic cells.

**Inhibitor · Natural Compounds · Compound Libraries · Recombinant Proteins**

This product is for Research Use Only · Not for Human or Veterinary or Therapeutic Use

Tel:781-999-4286 E\_mail:info@targetmol.com Address:34 Washington Street,Wellesley Hills,MA 02481