

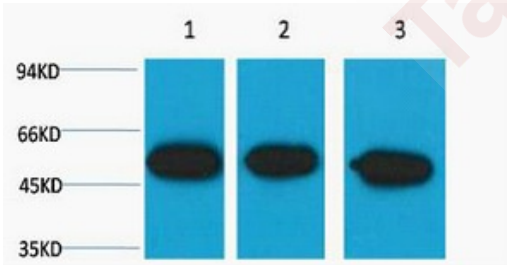
## Anti-TUBB3 Antibody (2J22)

### Product Details

Ig Type:	IgG1
Reactivity:	Human,Mouse,Rat
Conjugation:	Unconjugated
Molecular Weight:	Theoretical: 50 kDa.
Clone:	2J22

### Applications

Verified Activity: 1. Western blot analysis of 1) HeLa, 2) Mouse Brain, 3) Rat Brain, diluted at 1:5000.



Application:	WB
Recommended	WB: 1:500-2000

### Properties

Stability & Storage: Store at -20°C or -80°C for 12 months. Avoid repeated freeze-thaw cycles.  
Shipping: Shipping with blue ice.

### Antigen Details

Immunogen:	A synthesized peptide
Uniprot ID:	Q13509
Synonyms:	Tubulin beta-3 chain;TUBB3;TUBB4;Tubulin beta-III;Tubulin beta-4 chain

**Inhibitor · Natural Compounds · Compound Libraries · Recombinant Proteins**

This product is for Research Use Only · Not for Human or Veterinary or Therapeutic Use

Tel:781-999-4286 E\_mail:info@targetmol.com Address:34 Washington Street,Wellesley Hills,MA 02481