

Anti-TUBB2A Antibody (5L160)

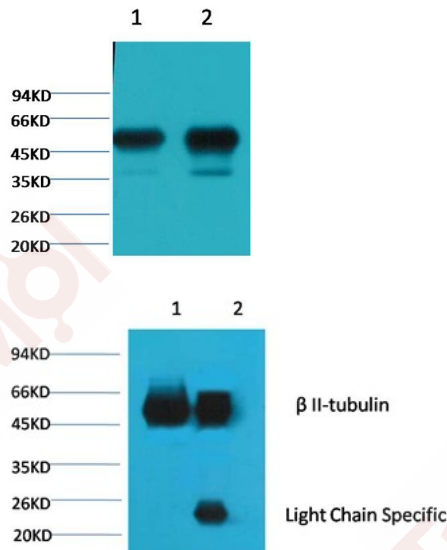
Product Details

| | |
|-------------------|--|
| Reactivity: | Mouse,Rat |
| Conjugation: | Unconjugated |
| Molecular Weight: | Actual: 50 kDa. |
| Clone: | 5L160 |
| Purification: | Affinity purification using immunogen. |

Applications

1. Western blot analysis of 1) Mouse Brain tissue, 2) Rat Brain tissue, using TMAC-04331 diluted at 1:100,000.
2. 1、 Input: Mouse Brain Tissue Lysate, 2、 IP product: IP dilute 1:200, Western blot analysis: primary antibody : TMAC-04331 1:10,000, Secondary antibody: Goat anti-Mouse IgG, Light chain specific, 1:5,000.

Verified Activity:



| | |
|--------------|-------------------------------|
| Application: | IP,WB |
| Recommended | WB: 1:50000-100000; IP: 1:200 |

Properties

- Stability & Storage: Store at -20°C or -80°C for 12 months. Avoid repeated freeze-thaw cycles.
- Shipping: Shipping with blue ice.

Antigen Details

Uniprot ID: Q13885

Synonyms: TUBB2A;Tubulin beta-2A chain;Tubulin beta class IIa;TUBB2

Research Background

Tubulin is the major constituent of microtubules. It exists as a heterodimer consisting of an alpha and a beta subunit. Class II beta tubulin is the major form of tubulin beta in neurons, although it is not neuronal specific. It is found in many other tissues including lung tissue and Schwann cells.

Inhibitor · Natural Compounds · Compound Libraries · Recombinant Proteins

This product is for Research Use Only · Not for Human or Veterinary or Therapeutic Use

Tel:781-999-4286 E_mail:info@targetmol.com Address:34 Washington Street,Wellesley Hills,MA 02481