

Anti-TUBB1 Antibody (2B743)

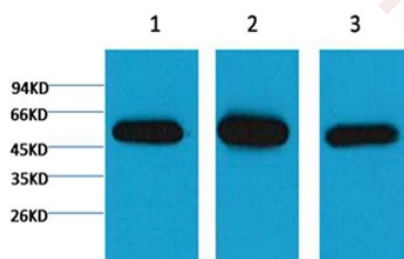
Product Details

Reactivity:	Human,Mouse,Rat
Conjugation:	Unconjugated
Molecular Weight:	Actual: 55 kDa.
Clone:	2B743
Purification:	Affinity purification using immunogen.

Applications

Verified Activity:

1. Western blot analysis of 1) HeLa, 2) Mouse Brain Tissue, 3) Rat Brain Tissue, using TMAC-04330 diluted at 1:5,000.



Application:	WB
Recommended	WB: 1:5000-10000

Properties

Stability & Storage:	Store at -20°C or -80°C for 12 months. Avoid repeated freeze-thaw cycles.
Shipping:	Shipping with blue ice.

Antigen Details

Uniprot ID:	Q9H4B7
Synonyms:	2810484G07Rik;M(beta)1;Tubulin beta 1 class VI;class VI;TUBB 1;dj543j19.4;TBB1_HUMAN;beta 1 tubulin;Tubulin beta 1;tubulin beta1;Beta-tubulin;Tubulin beta-1 chain;Beta tubulin 1;Class VI beta tubulin

Research Background

Tubulin is one of several members of a small family of globular proteins. The tubulin superfamily includes five distinct families, the alpha-, beta-, gamma-, delta-, and epsilon-tubulins. The most common members of the tubulin family are α -tubulin and β -tubulin, the proteins that make up microtubules. Each has a molecular weight of approximately 55 kD. Microtubules are assembled from dimers of α - and β -tubulin.

Inhibitor · Natural Compounds · Compound Libraries · Recombinant Proteins

This product is for Research Use Only. Not for Human or Veterinary or Therapeutic Use

Tel:781-999-4286 E_mail:info@targetmol.com Address:34 Washington Street,Wellesley Hills,MA 02481