

Anti- α -tubulin Antibody (4E245)

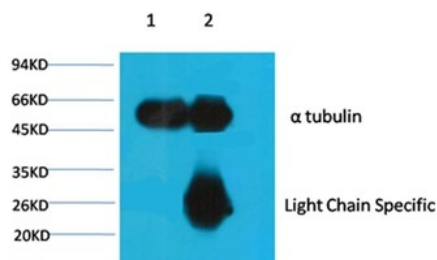
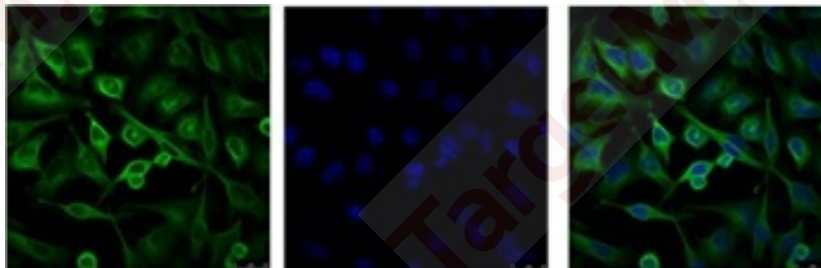
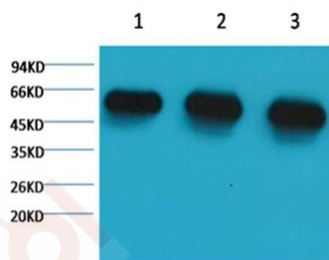
Product Details

Reactivity:	Human,Mouse,Rat
Conjugation:	Unconjugated
Molecular Weight:	Actual: 52 kDa.
Clone:	4E245
Purification:	Affinity purification using immunogen.

Applications

1. Western blot analysis of 1) HeLa, 2) Rat Brain Tissue, 3) Mouse Brain Tissue, using TMAC-04329 diluted at 1:5,000.
2. IF analysis of HeLa with TMAC-04329 (Left) and DAPI (Right) diluted at 1:100.
3. 1、 Input: Mouse Brain Tissue Lysate, 2、 IP product: IP dilute 1:200, Western blot analysis: primary antibody : TMAC-04329 1:5,000, Secondary antibody: Goat anti-Mouse IgG, Light chain specific, 1:5,000.

Verified Activity:



Application: IF,IP,WB

Recommended WB: 1:5000-10000; IF: 1:100-200; IP: 1:200

Properties

Stability & Storage: Store at -20°C or -80°C for 12 months. Avoid repeated freeze-thaw cycles.

Shipping: Shipping with blue ice.

Antigen Details

Uniprot ID: Q71U36

Synonyms: Testis-specific alpha-tubulin;FLJ30169;Detyrosinated alpha Tubulin;Tuba4a;Tubulin alpha 1 (testis specific); α -tubulin;Tubulin-alpha;H2 alpha;alpha-tubulin 1;TUBA 4A;Tubulin alpha 4a; Tubulin alpha 4A chain;Tubulin alpha 1;Tubulin H2-alpha;TBA4A;TUBA1;Tubulin alpha 1 chain

Research Background

Tubulin is one of several members of a small family of globular proteins. The tubulin superfamily includes five distinct families, the alpha-, beta-, gamma-, delta-, and epsilon-tubulins. The most common members of the tubulin family are α -tubulin and β -tubulin, the proteins that make up microtubules. Each has a molecular weight of approximately 55 KD. Microtubules are assembled from dimers of α - and β -tubulin

Inhibitor · Natural Compounds · Compound Libraries · Recombinant Proteins

This product is for Research Use Only · Not for Human or Veterinary or Therapeutic Use

Tel:781-999-4286 E_mail:info@targetmol.com Address:34 Washington Street,Wellesley Hills,MA 02481