

Anti-Acetyl- α -tubulin (Lys40) Antibody (7S611)

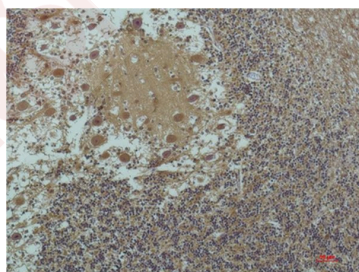
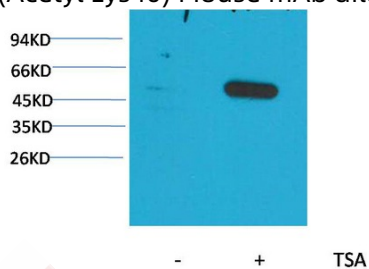
Product Details

Ig Type:	IgG1
Reactivity:	Human,Mouse,Rat
Conjugation:	Unconjugated
Molecular Weight:	Theoretical: 52 kDa.
Clone:	7S611

Applications

Verified Activity:

1. Western blot analysis of extracts from Hela cells, untreated (-) or treated with TSA (1 μ M, 18 hr; +), using Acetyl- α -tubulin(Lys40) Mouse mAb 1:2000.
2. Immunohistochemical analysis of paraffin-embedded Human Brain Tissue using α -tubulin (Acetyl Lys40) Mouse mAb diluted at 1:200.



Application:	IHC,WB
Recommended	WB: 1:1000-2000; IHC: 1:100-200

Properties

Stability & Storage:	Store at -20°C or -80°C for 12 months. Avoid repeated freeze-thaw cycles.
Shipping:	Shipping with blue ice.

Antigen Details

Immunogen: A synthesized peptide

Synonyms: Ac- α -tubulin (Lys40); α -tubulinK40-acetylated;Ac- α -tubulin (K40); α -tubulinK40ac;Acetyl- α -tubulin (K40);Ac- α -tubulinK40

Inhibitor · Natural Compounds · Compound Libraries · Recombinant Proteins

This product is for Research Use Only· Not for Human or Veterinary or Therapeutic Use

Tel:781-999-4286 E_mail:info@targetmol.com Address:34 Washington Street,Wellesley Hills,MA 02481