

## Anti-Acetyl- $\alpha$ -tubulin (Lys40) Antibody (4A610)

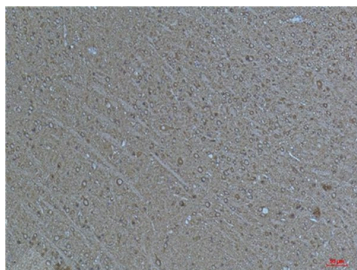
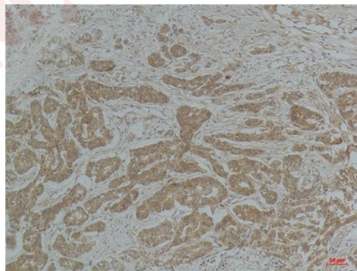
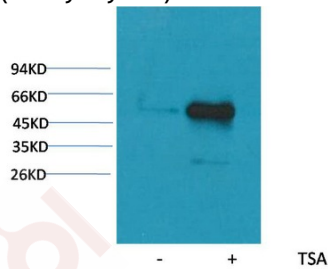
### Product Details

Ig Type:	IgG1
Reactivity:	Human,Mouse,Rat
Conjugation:	Unconjugated
Molecular Weight:	Theoretical: 52 kDa.
Clone:	4A610

### Applications

#### Verified Activity:

1. Western blot analysis of extracts from Hela cells, untreated (-) or treated with TSA (1 $\mu$ M, 18 hr; +), using Acetyl-  $\alpha$ -tubulin(Lys40) Mouse mAb 1:2000.
2. Immunohistochemical analysis of paraffin-embedded Human Breast Carcinoma using  $\alpha$ -tubulin(Acetyl Lys40) Mouse mAb diluted at 1:200.
3. Immunohistochemical analysis of paraffin-embedded Mouse Brain Tissue using  $\alpha$ -tubulin (Acetyl Lys40) Mouse mAb diluted at 1:200.



Application:	IHC,WB
Recommended	WB: 1:1000-2000; IHC: 1:50-100

**Properties**

Stability & Storage: Store at -20°C or -80°C for 12 months. Avoid repeated freeze-thaw cycles.

Shipping: Shipping with blue ice.

---

**Antigen Details**

Immunogen: A synthesized peptide

Synonyms: Ac- $\alpha$ -tubulin (Lys40); $\alpha$ -tubulinK40-acetylated; $\alpha$ -tubulinK40ac;Acetyl- $\alpha$ -tubulin (K40);Ac- $\alpha$ -tubulinK40;Ac- $\alpha$ -tubulin (K40)

**Inhibitor · Natural Compounds · Compound Libraries · Recombinant Proteins**

This product is for Research Use Only · Not for Human or Veterinary or Therapeutic Use

Tel:781-999-4286 E\_mail:info@targetmol.com Address:34 Washington Street,Wellesley Hills,MA 02481