

## Anti-YB1 Antibody (1K676)

### Product Details

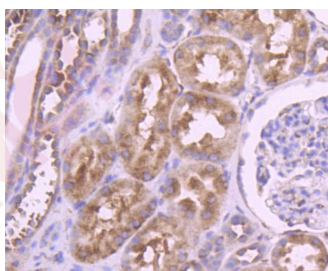
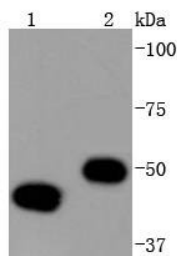
Ig Type:	IgG
Reactivity:	Human,Mouse,Rat
Conjugation:	Unconjugated
Molecular Weight:	Theoretical: 50 kDa.
Clone:	1K676
Purification:	ProA affinity purified

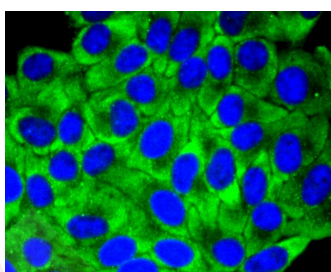
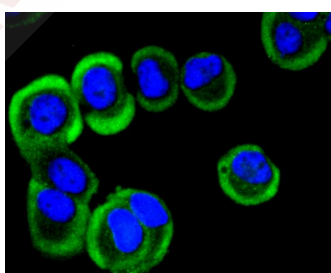
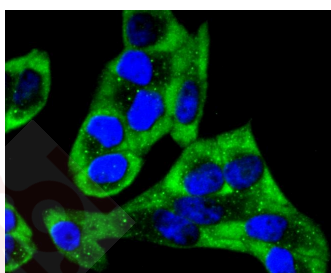
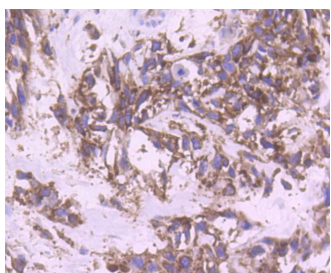
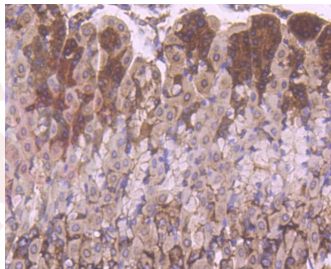
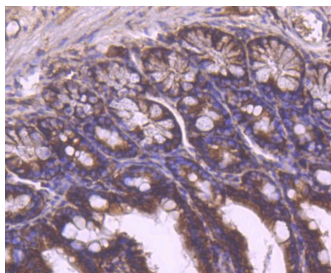
### Applications

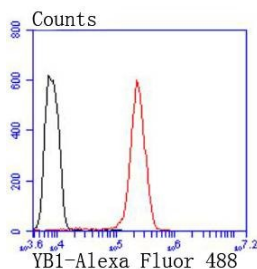
1. Western blot analysis of YB1 on different lysates using anti-YB1 antibody at 1/1,000 dilution. Positive control: Lane 1: Hela, Lane 2: Jurkat.
2. Immunohistochemical analysis of paraffin-embedded human kidney tissue using anti-YB1 antibody. Counter stained with hematoxylin.
3. Immunohistochemical analysis of paraffin-embedded mouse colon tissue using anti-YB1 antibody. Counter stained with hematoxylin.
4. Immunohistochemical analysis of paraffin-embedded mouse stomach tissue using anti-YB1 antibody. Counter stained with hematoxylin.
5. Immunohistochemical analysis of paraffin-embedded human breast carcinoma tissue using anti-YB1 antibody. Counter stained with hematoxylin.

### Verified Activity:

6. ICC staining YB1 in Hela cells (green). The nuclear counter stain is DAPI (blue). Cells were fixed in paraformaldehyde, permeabilised with 0.25% Triton X100/PBS.
7. ICC staining YB1 in MCF-7 cells (green). The nuclear counter stain is DAPI (blue). Cells were fixed in paraformaldehyde, permeabilised with 0.25% Triton X100/PBS.
8. ICC staining YB1 in HepG2 cells (green). The nuclear counter stain is DAPI (blue). Cells were fixed in paraformaldehyde, permeabilised with 0.25% Triton X100/PBS.
9. Flow cytometric analysis of Hela cells with YB1 antibody at 1/50 dilution (red) compared with an unlabelled control (cells without incubation with primary antibody; black). Alexa Fluor 488-conjugated goat anti rabbit IgG was used as the secondary antibody.







Application: FCM,ICC/IF,IHC,IP,WB

Recommended WB: 1:1000-5000; IHC: 1:50-200; ICC/IF: 1:100-500; FCM: 1:50-100

### Properties

Stability & Storage: Store at -20°C or -80°C for 12 months. Avoid repeated freeze-thaw cycles.

Shipping: Shipping with blue ice.

### Antigen Details

Immunogen: Recombinant Protein

Uniprot ID: P67809

Synonyms: Y-box-binding protein 1;CSDA2;CSDB;MGC104858;p50;YBX 1;YB 1;Y-box transcription factor; MGC117250;CBF-A;DNA-binding protein B;MDR NF1;Nuclease-sensitive element-binding protein 1;MGC110976;NSEP 1;NSEP1;EFI-A;Y-box binding protein 1;Enhancer factor I subunit A; DNA binding protein B;CCAAT binding transcription factor I subunit A;BP 8;YBOX1\_HUMAN; Nuclease sensitive element binding protein 1;DBPB;CCAAT-binding transcription factor I subunit A;Q15905;ybx1

### Research Background

Y-box binding protein YB-1 (also known as CCAAT-binding transcription factor, enhancer factor I subunit A and DNA-binding protein B) belongs to a family of multifunctional proteins which regulate both transcription and translation. Y-box proteins interact with a wide variety of nucleic acid structures to act as transcription factors and mRNA masking proteins. The modular structure of Y-box proteins includes a highly conserved N-terminal cold-shock domain (CSD, equivalent to the bacterial cold-shock proteins) and four basic C-terminal domains containing Arginine clusters and aromatic residues. YB-1 plays a role in cell proliferation as an activator of growth-associated gene expression. YB-1 is also a repressor of the cell death-associated gene FAS. YB-1 may play an important role in controlling cell survival by regulating the expression of cell growth-associated and death-associated genes.

**Inhibitor · Natural Compounds · Compound Libraries · Recombinant Proteins**

This product is for Research Use Only · Not for Human or Veterinary or Therapeutic Use

Tel:781-999-4286 E\_mail:info@targetmol.com Address:34 Washington Street,Wellesley Hills,MA 02481