

## Anti-WNK1 Antibody (1S306)

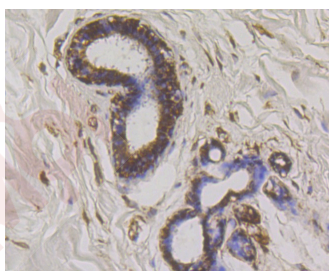
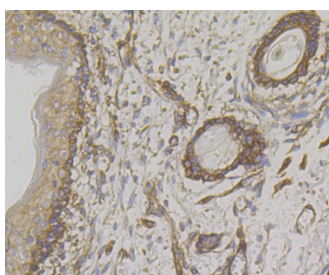
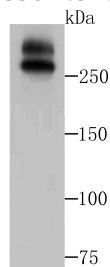
### Product Details

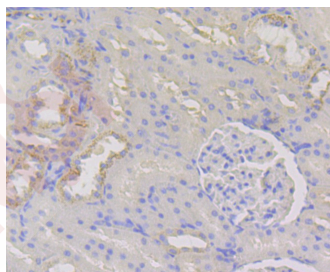
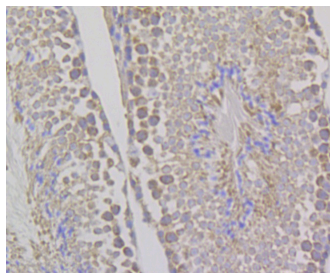
Ig Type:	IgG
Reactivity:	Human,Mouse,Rat
Conjugation:	Unconjugated
Molecular Weight:	Theoretical: 250/300 kDa.
Clone:	1S306
Purification:	ProA affinity purified

### Applications

#### Verified Activity:

1. Western blot analysis of WNK1 on A549 cell lysates using anti-WNK1 antibody at 1/1,000 dilution.
2. Immunohistochemical analysis of paraffin-embedded human skin tissue using anti-WNK1 antibody. Counter stained with hematoxylin.
3. Immunohistochemical analysis of paraffin-embedded human breast cancer tissue using anti-WNK1 antibody. Counter stained with hematoxylin.
4. Immunohistochemical analysis of paraffin-embedded mouse testis tissue using anti-WNK1 antibody. Counter stained with hematoxylin.
5. Immunohistochemical analysis of paraffin-embedded rat kidney tissue using anti-WNK1 antibody. Counter stained with hematoxylin.





Application: IHC,WB

Recommended WB: 1:500-2000; IHC: 1:50-200

### Properties

Stability & Storage: Store at -20°C or -80°C for 12 months. Avoid repeated freeze-thaw cycles.

Shipping: Shipping with blue ice.

### Antigen Details

Immunogen: A synthesized peptide: within Human WNK1 aa 100-200 (Cysteine residue)

Antigen Species: human

Uniprot ID: Q9H4A3

Synonyms: Protein kinase with no lysine 1;Serine/threonine-protein kinase WNK1;KDP;HSN2;Erythrocyte 65 kDa protein;Kinase deficient protein;hWNK1;p65;WNK 1;PRKWNK1;KIAA0344;EC 2.7.11.1; Protein kinase lysine-deficient 1

### Research Background

Serine/threonine kinase which plays an important role in the regulation of electrolyte homeostasis, cell signaling, survival, and proliferation. Acts as an activator and inhibitor of sodium-coupled chloride cotransporters and potassium-coupled chloride cotransporters respectively. Activates SCNN1A, SCNN1B, SCNN1D and SGK1. Controls sodium and chloride ion transport by inhibiting the activity of WNK4, by either phosphorylating the kinase or via an interaction between WNK4 and the autoinhibitory domain of WNK1. WNK4 regulates the activity of the thiazide-sensitive Na-Cl cotransporter, SLC12A3, by phosphorylation. WNK1 may also play a role in actin cytoskeletal reorganization. Phosphorylates NEDD4L. Acts as a scaffold to inhibit SLC4A4, SLC26A6 as well as CFTR activities and surface expression, recruits STK39 which mediates the inhibition.

**Inhibitor · Natural Compounds · Compound Libraries · Recombinant Proteins**

This product is for Research Use Only · Not for Human or Veterinary or Therapeutic Use

Tel:781-999-4286 E\_mail:info@targetmol.com Address:34 Washington Street,Wellesley Hills,MA 02481