

Anti-Wilms tumor/WT1 Antibody (8L145)

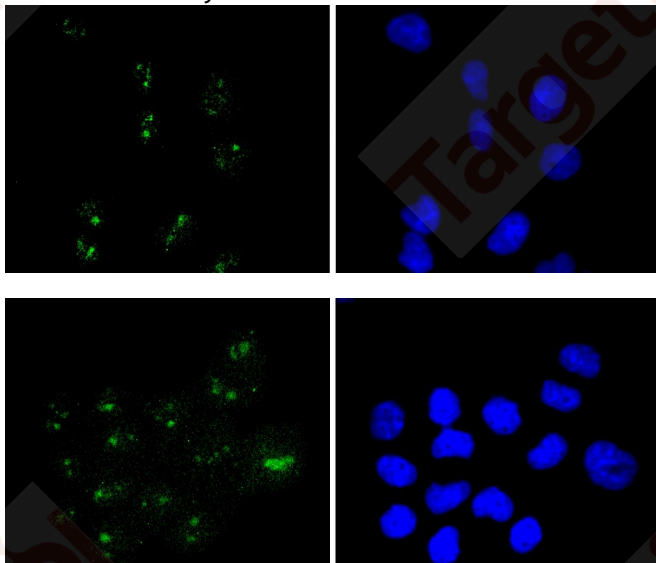
Product Details

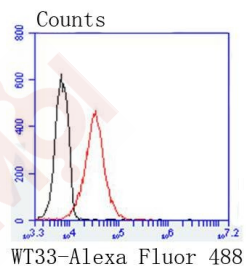
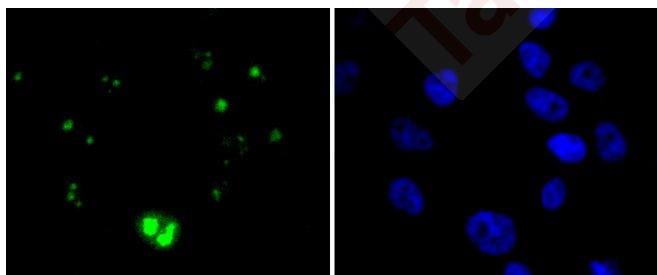
Ig Type:	IgG
Reactivity:	Human,Mouse
Conjugation:	Unconjugated
Molecular Weight:	Theoretical: 55 kDa.
Clone:	8L145
Purification:	Affinity-chromatography

Applications

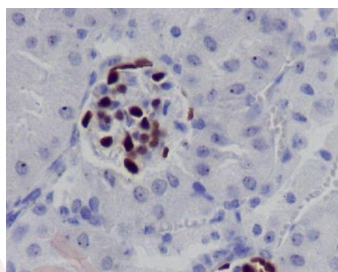
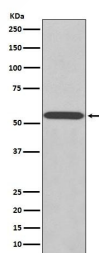
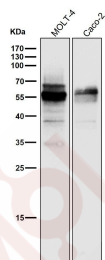
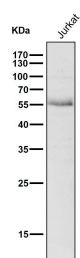
Verified Activity:

1. ICC staining Wilms Tumor Protein in Hela cells (green). The nuclear counter stain is DAPI (blue). Cells were fixed in paraformaldehyde, permeabilised with 0.25% Triton X100/PBS.
2. ICC staining Wilms Tumor Protein in LO2 cells (green). The nuclear counter stain is DAPI (blue). Cells were fixed in paraformaldehyde, permeabilised with 0.25% Triton X100/PBS.
3. ICC staining Wilms Tumor Protein in PC-3M cells (green). The nuclear counter stain is DAPI (blue). Cells were fixed in paraformaldehyde, permeabilised with 0.25% Triton X100/PBS.
4. Flow cytometric analysis of K562 cells with Wilms Tumor Protein antibody at 1/50 dilution (red) compared with an unlabelled control (cells without incubation with primary antibody; black). Alexa Fluor 488-conjugated goat anti rabbit IgG was used as the secondary antibody.
5. All lanes use the Antibody at 1:1K dilution for 1 hour at room temperature.
6. All lanes use the Antibody at 1:1K dilution for 1 hour at room temperature.
7. Western blot analysis of WT1 expression in K562 cell lysate.
8. Immunohistochemical analysis of paraffin-embedded mouse kidney, using Wilms Tumor Protein Antibody.





WT33-Alexa Fluor 488



Application: FCM, ICC/IF, IHC, WB

Recommended WB: 1:1000-2000; IHC: 1:100-200; ICC/IF: 1:50-200; FCM: 1:20-100

A DRUG SCREENING EXPERT

Properties

Stability & Storage: Store at 2°C-8°C for 1 month. Store at -20°C or -80°C for 12 months. Avoid repeated freeze-thaw cycles.

Shipping: Shipping with blue ice.

Antigen Details

Immunogen: A synthesized peptide: human WT1

Antigen Species: human

Uniprot ID: P19544

Research Background

Transcription factor that plays an important role in cellular development and cell survival (PubMed:7862533). Recognizes and binds to the DNA sequence 5'-GCG(T/G)GGGCG-3'. Regulates the expression of numerous target genes, including EPO. Plays an essential role for development of the urogenital system. It has a tumor suppressor as well as an oncogenic role in tumor formation.

Inhibitor · Natural Compounds · Compound Libraries · Recombinant Proteins

This product is for Research Use Only · Not for Human or Veterinary or Therapeutic Use

Tel:781-999-4286 E_mail:info@targetmol.com Address:34 Washington Street,Wellesley Hills,MA 02481