

Anti-VPS35 Antibody (7F247)

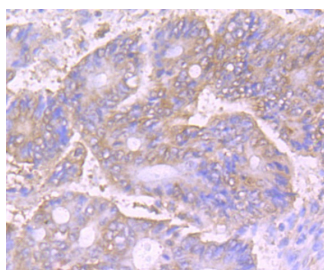
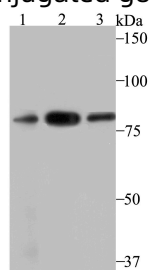
Product Details

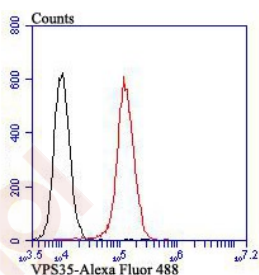
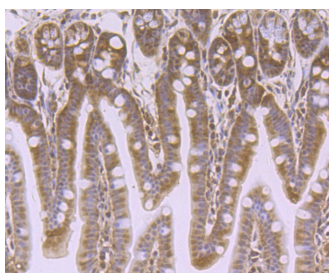
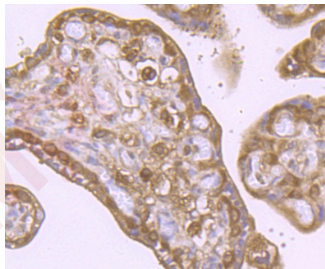
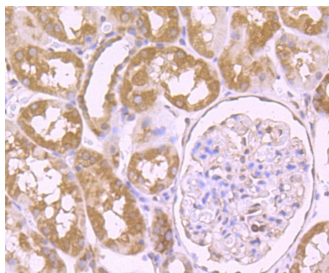
Ig Type:	IgG
Reactivity:	Human,Mouse
Conjugation:	Unconjugated
Molecular Weight:	Theoretical: 91 kDa.
Clone:	7F247
Purification:	ProA affinity purified

Applications

Verified Activity:

1. Western blot analysis of VPS35 on different lysates using anti-VPS35 antibody at 1/500 dilution. Positive control: Lane 1: PC-3M, Lane 2: U937, Lane 3: SH-SY-5Y.
2. Immunohistochemical analysis of paraffin-embedded human colon cancer tissue using anti-VPS35 antibody. Counter stained with hematoxylin.
3. Immunohistochemical analysis of paraffin-embedded human kidney tissue using anti-VPS35 antibody. Counter stained with hematoxylin.
4. Immunohistochemical analysis of paraffin-embedded human placenta tissue using anti-VPS35 antibody. Counter stained with hematoxylin.
5. Immunohistochemical analysis of paraffin-embedded mouse colon tissue using anti-VPS35 antibody. Counter stained with hematoxylin.
6. Flow cytometric analysis of 293T cells with VPS35 antibody at 1/100 dilution (red) compared with an unlabelled control (cells without incubation with primary antibody; black). Alexa Fluor 488-conjugated goat anti-rabbit IgG was used as the secondary antibody.





Application: FCM,IHC,WB

Recommended WB: 1:500-1000; IHC: 1:100-300; FCM: 1:50-100

Properties

Stability & Storage: Store at -20°C or -80°C for 12 months. Avoid repeated freeze-thaw cycles.

Shipping: Shipping with blue ice.

Antigen Details

Immunogen: Recombinant Protein

Uniprot ID: Q96QK1

Synonyms: MEM3;Vacuolar protein sorting-associated protein 35;Maternal-embryonic 3;hVPS35;Vesicle protein sorting 35;VPS35

Research Background

Vacuolar sorting proteins (VPSs) are required for proper trafficking of endocytic and biosynthetic proteins to the vacuole and play an important role in the budding process of cells. VPS35 (vacuolar protein sorting 35), also known as MEM3, is the 796 amino acid human homolog of the *S. cerevisiae* Vps35 protein. Localized to the cytoplasm and to the peripheral membrane, VPS35 is an essential component of the retromer complex which is involved in retrieval

A DRUG SCREENING EXPERT

of lysosomal enzyme receptors from endosomes to the trans-Golgi network. VPS35 is expressed ubiquitously with highest expression in heart, placenta, brain, testis, kidney, colon, ovary and spleen. In addition to its crucial role in the retromer complex, VPS35 is part of a subcomplex that is required to regulate transcytosis of the polymeric immunoglobulin receptor from the basolateral to the apical surface of epithelial cells and hepatocytes.

Inhibitor · Natural Compounds · Compound Libraries · Recombinant Proteins

This product is for Research Use Only · Not for Human or Veterinary or Therapeutic Use

Tel:781-999-4286 E_mail:info@targetmol.com Address:34 Washington Street,Wellesley Hills,MA 02481