

Anti-VPS26 Antibody (5Y706)

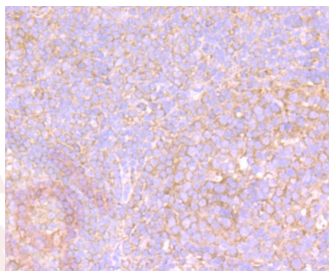
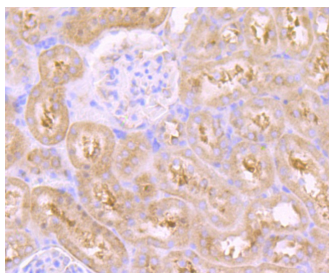
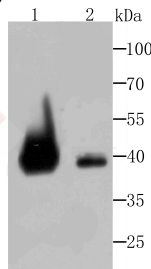
Product Details

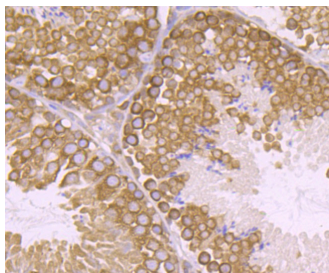
Ig Type:	IgG
Reactivity:	Human,Mouse,Rat
Conjugation:	Unconjugated
Molecular Weight:	Theoretical: 38 kDa.
Clone:	5Y706
Purification:	ProA affinity purified

Applications

Verified Activity:

1. Western blot analysis of VPS26 on different cell lysates using anti-VPS26 at 1/500 dilution. Positive control: Line 1: Rat kidney tissue, Line 2: A431.
2. Immunohistochemical analysis of paraffin-embedded rat kidney tissue using anti-VPS26 antibody. Counter stained with hematoxylin.
3. Immunohistochemical analysis of paraffin-embedded human tonsil tissue using anti-VPS26 antibody. Counter stained with hematoxylin.
4. Immunohistochemical analysis of paraffin-embedded mouse testis tissue using anti-VPS26 antibody. Counter stained with hematoxylin.





Application: IHC,IP,WB

Recommended WB: 1:500-2000; IHC: 1:50-200; IP: 1:10-50

Properties

Stability & Storage: Store at -20°C or -80°C for 12 months. Avoid repeated freeze-thaw cycles.

Shipping: Shipping with blue ice.

Antigen Details

Immunogen: Recombinant Protein

Uniprot ID: O75436

Synonyms: VPS 26A;Hbeta58 homolog;VP26A_HUMAN;Vacuolar protein sorting 26 homolog A S. pombe; Vacuolar protein sorting 26A;HB 58;Vacuolar protein sorting 26 homolog A;PEP8A;Vacuolar protein sorting 26 homolog A yeast;Vesicle protein sorting 26A;FLJ12930;Vacuolar protein sorting 26 yeast homolog;hVPS26;PEP 8A;Vacuolar protein sorting 26 A;hVPS 26;Hbeta58; Vesicle protein sorting 26;Hbeta 58 homolog;HB58;VPS 26;Vacuolar protein sorting-associated protein 26A;MGC94168;Vacuolar protein sorting associated protein 26A;VPS26A;Vacuolar protein sorting 26 yeast;Vacuolar protein sorting 26;Hbeta 58

Research Background

Acts as component of the retromer cargo-selective complex (CSC). The CSC is believed to be the core functional component of retromer or respective retromer complex variants acting to prevent missorting of selected transmembrane cargo proteins into the lysosomal degradation pathway. The recruitment of the CSC to the endosomal membrane involves RAB7A and SNX3. The SNX-BAR retromer mediates retrograde transport of cargo proteins from endosomes to the trans-Golgi network (TGN) and is involved in endosome-to-plasma membrane transport for cargo protein recycling. The SNX3-retromer mediates the retrograde endosome-to-TGN transport of WLS distinct from the SNX-BAR retromer pathway. Required for retrograde transport of lysosomal enzyme receptor IGF2R. Required to regulate transcytosis of the polymeric immunoglobulin receptor (pIgR-pIgA). Required for the endosomal localization of WASHC2A (indicative for the WASH complex). Required for the endosomal localization of TBC1D5. Mediates retromer cargo recognition of SORL1 and is involved in trafficking of SORL1 implicated in sorting and processing of APP. Involved in retromer-independent lysosomal sorting of F2R. Involved in recycling of ADRB2. Enhances the affinity of SNX27 for PDZ-binding motifs in cargo proteins.

Inhibitor · Natural Compounds · Compound Libraries · Recombinant Proteins

This product is for Research Use Only · Not for Human or Veterinary or Therapeutic Use

Tel:781-999-4286 E_mail:info@targetmol.com Address:34 Washington Street,Wellesley Hills,MA 02481