

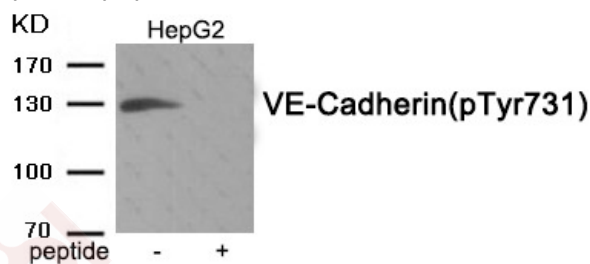
Anti-Phospho-VE-Cadherin (Tyr731) Polyclonal Antibody

Product Details

Ig Type:	IgG
Reactivity:	Human,Mouse,Rat
Conjugation:	Unconjugated
Molecular Weight:	Actual: 130 kDa.
Purification:	Antibodies were produced by immunizing rabbits with synthetic phosphopeptide and KLH conjugates. Antibodies were purified by affinity-chromatography using epitope-specific phosphopeptide. Non-phospho specific antibodies were removed by chromatography using non-phosphopeptide.

Applications

Verified Activity: 1. Western blot analysis of extracts from HepG2 cells treated with Na₃VO₄ using Phospho-VE-Cadherin (Tyr731) antibody TMAC-04235. The lane on the right is treated with the antigen-specific peptide.



Application:	IF,IHC,WB
Recommended	WB: 1:500-2000; IHC: 1:100-300; IF: 1:50-200

Properties

Stability & Storage:	Store at -20°C or -80°C for 12 months. Avoid repeated freeze-thaw cycles.
Shipping:	Shipping with blue ice.

Antigen Details

Immunogen:	Peptide sequence around phosphorylation site of Tyrosine731 (H-I-Y(p)-G-Y) derived from Human VE-Cadherin
Antigen Species:	Human
Uniprot ID:	P33151
Synonyms:	p-VE-Cadherin (Y731);VE-Cadherin (p-Tyr731);p-VE-Cadherin (Tyr731);VE-Cadherin (p-Y731)

Research Background

Cadherins are calcium-dependent cell adhesion proteins. They preferentially interact with themselves in a homophilic manner in connecting cells; cadherins may thus contribute to the sorting of heterogeneous cell types. This cadherin may play an important role in endothelial cell biology through control of the cohesion and organization of the intercellular junctions. It associates with alpha-catenin forming a link to the cytoskeleton. Acts in concert with

KRIT1 to establish and maintain correct endothelial cell polarity and vascular lumen.

Inhibitor · Natural Compounds · Compound Libraries · Recombinant Proteins

This product is for Research Use Only · Not for Human or Veterinary or Therapeutic Use

Tel:781-999-4286 E_mail:info@targetmol.com Address:34 Washington Street,Wellesley Hills,MA 02481