

Anti-VCP Antibody (3I403)

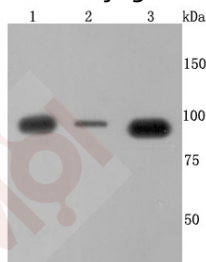
Product Details

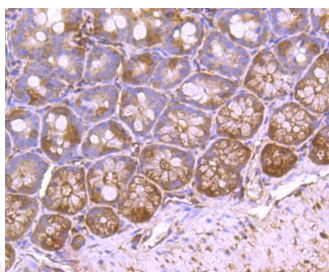
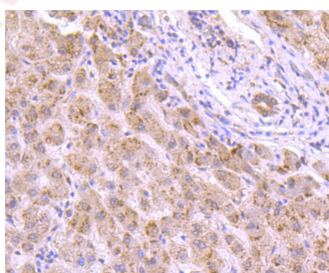
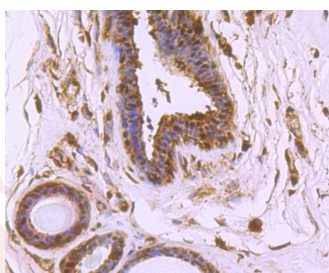
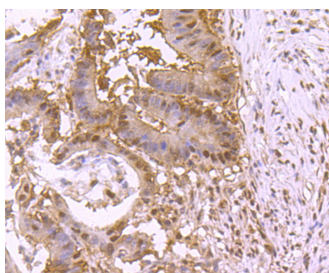
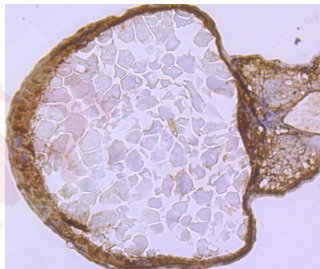
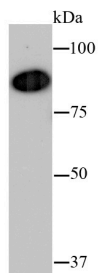
Ig Type:	IgG
Reactivity:	Human,Mouse,Rat,zebrafish
Conjugation:	Unconjugated
Molecular Weight:	Theoretical: 89 kDa.
Clone:	3I403
Purification:	ProA affinity purified

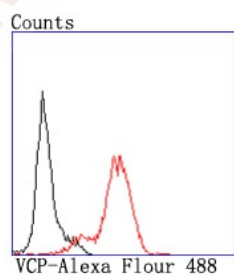
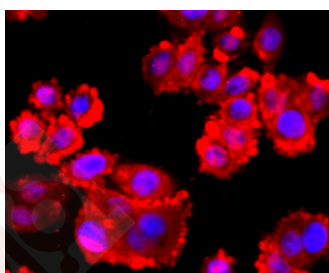
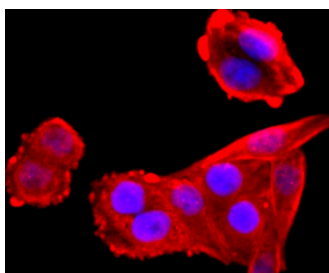
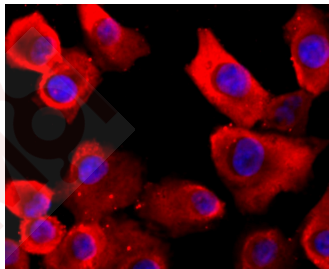
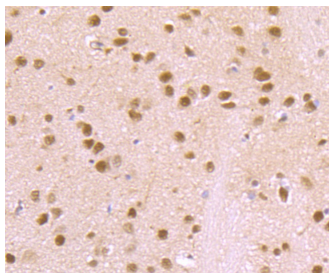
Applications

1. Western blot analysis of VCP on different cells lysates using anti-VCP antibody at 1/500 dilution. Positive control: Line 1: SH-SY5Y, Line 2: HepG2, Line 3: Hela.
2. Western blot analysis of VCP on hybrid fish (crucian-carp) heart tissue lysate using anti-VCP antibody at 1/500 dilution.
3. Immunohistochemical analysis of paraffin-embedded zebrafish tissue using anti-VCP antibody. Counter stained with hematoxylin.
4. Immunohistochemical analysis of paraffin-embedded human colon cancer tissue using anti-VCP antibody. Counter stained with hematoxylin.
5. Immunohistochemical analysis of paraffin-embedded human breast cancer tissue using anti-VCP antibody. Counter stained with hematoxylin.
6. Immunohistochemical analysis of paraffin-embedded human liver tissue using anti-VCP antibody. Counter stained with hematoxylin.
7. Immunohistochemical analysis of paraffin-embedded mouse colon tissue using anti-VCP antibody. Counter stained with hematoxylin.
8. Immunohistochemical analysis of paraffin-embedded rat brain tissue using anti-VCP antibody. Counter stained with hematoxylin.
9. ICC staining VCP in A549 cells (red). The nuclear counter stain is DAPI (blue). Cells were fixed in paraformaldehyde, permeabilised with 0.25% Triton X100/PBS.
10. ICC staining VCP in Hela cells (red). The nuclear counter stain is DAPI (blue). Cells were fixed in paraformaldehyde, permeabilised with 0.25% Triton X100/PBS.
11. ICC staining VCP in SW480 cells (red). The nuclear counter stain is DAPI (blue). Cells were fixed in paraformaldehyde, permeabilised with 0.25% Triton X100/PBS.
12. Flow cytometric analysis of HL-60 cells with VCP antibody at 1/50 dilution (red) compared with an unlabelled control (cells without incubation with primary antibody; black). Alexa Fluor 488-conjugated goat anti rabbit IgG was used as the secondary antibody.

Verified Activity:







Application: FCM,ICC/IF,IHC,IP,WB

Recommended WB: 1:1000-5000; IHC: 1:50-200; ICC/IF: 1:50-200; FCM: 1:50-100

Properties

Stability & Storage: Store at -20°C or -80°C for 12 months. Avoid repeated freeze-thaw cycles.

Shipping: Shipping with blue ice.

Antigen Details

Immunogen:	Recombinant Protein
Uniprot ID:	P55072
Synonyms:	VCP;15S Mg(2+)-ATPase p97 Subunit;Transitional Endoplasmic Reticulum ATPase;Valosin-Containing Protein;TER ATPase

Research Background

Valosin containing protein (VCP), also designated TERA (for transitional endoplasmic reticulum ATPase) or p97, is a member of the AAA family of ATPases, which are involved in a variety of cellular activities. VCP is the mammalian homolog of *Saccharomyces cerevisiae* Cdc48, a protein essential for the completion of mitosis in yeast. VCP is thought to be involved in a variety of membrane functions and in the regulation of the cell cycle. It associates with ubiquitinated I κ B- α as well as with the 26S Proteasome, indicating a potential role for VCP in the proteasome-mediated degradation of I κ B- α .

Inhibitor · Natural Compounds · Compound Libraries · Recombinant Proteins

This product is for Research Use Only · Not for Human or Veterinary or Therapeutic Use

Tel:781-999-4286 E_mail:info@targetmol.com Address:34 Washington Street,Wellesley Hills,MA 02481