

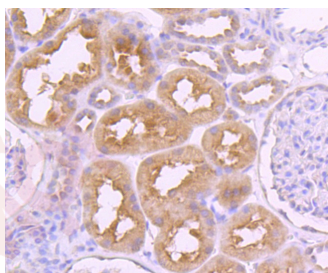
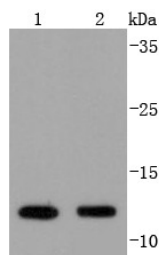
Anti-VAMP8 Antibody (4K35)

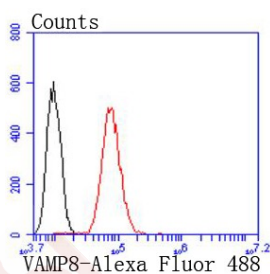
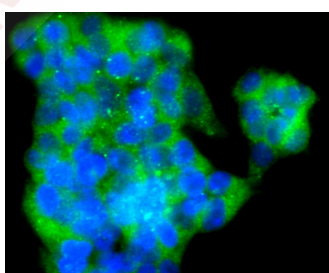
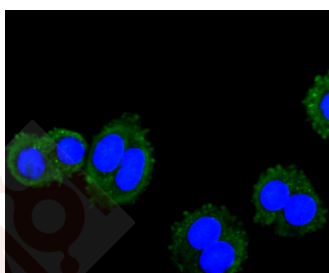
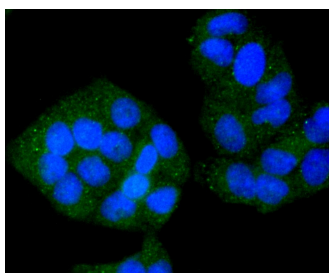
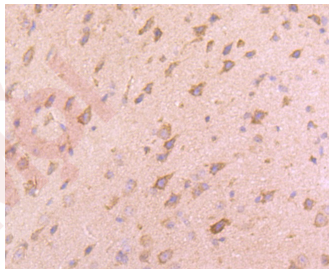
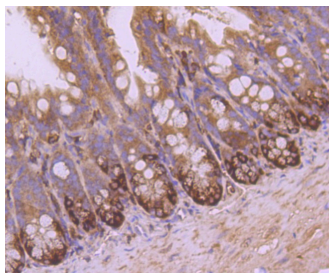
Product Details

Ig Type:	IgG
Reactivity:	Human,Mouse,Rat
Conjugation:	Unconjugated
Molecular Weight:	Theoretical: 11 kDa.
Clone:	4K35
Purification:	ProA affinity purified

Applications

1. Western blot analysis of VAMP8 on different lysates using anti-VAMP8 antibody at 1/1,000 dilution. Positive control: Lane 1: Hela, Lane 2: Mouse kidney.
 2. Immunohistochemical analysis of paraffin-embedded human kidney tissue using anti-VAMP8 antibody. Counter stained with hematoxylin.
 3. Immunohistochemical analysis of paraffin-embedded mouse colon tissue using anti-VAMP8 antibody. Counter stained with hematoxylin.
 4. Immunohistochemical analysis of paraffin-embedded mouse brain tissue using anti-VAMP8 antibody. Counter stained with hematoxylin.
- Verified Activity:
5. ICC staining VAMP8 in Hela cells (green). The nuclear counter stain is DAPI (blue). Cells were fixed in paraformaldehyde, permeabilised with 0.25% Triton X100/PBS.
 6. ICC staining VAMP8 in SW480 cells (green). The nuclear counter stain is DAPI (blue). Cells were fixed in paraformaldehyde, permeabilised with 0.25% Triton X100/PBS.
 7. ICC staining VAMP8 in 293T cells (green). The nuclear counter stain is DAPI (blue). Cells were fixed in paraformaldehyde, permeabilised with 0.25% Triton X100/PBS.
 8. Flow cytometric analysis of Hela cells with VAMP8 antibody at 1/50 dilution (red) compared with an unlabelled control (cells without incubation with primary antibody; black). Alexa Fluor 488-conjugated goat anti rabbit IgG was used as the secondary antibody.





Application: FCM, ICC/IF, IHC, IP, WB

Recommended WB: 1:1000-2000; IHC: 1:50-200; ICC/IF: 1:50-100; FCM: 1:50-100

Properties

Stability & Storage: Store at -20°C or -80°C for 12 months. Avoid repeated freeze-thaw cycles.

Shipping: Shipping with blue ice.

Antigen Details

Immunogen: Recombinant Protein

Uniprot ID: Q9BV40

Synonyms: EDB; Vesicle-associated membrane protein 8; VAMP 8; Vesicle associated membrane protein 8; VAMP8_HUMAN; Endobrevin

Research Background

Syntaxins were originally thought to be docking proteins, but have more recently been categorized as anchoring proteins that anchor themselves to the cytoplasmic surfaces of cellular membranes. Syntaxins bind to various proteins involved in exocytosis, including VAMPs (vesicle-associated membrane proteins), NSF (N-ethylmaleimide-sensitive factor), SNAPs (soluble NSF attachment proteins) and Synaptotagmin. Endobrevin, also designated VAMP-8 or ED, is a 100 amino acid single-pass type IV membrane protein that belongs to the synaptobrevin family. Similar in sequence to the synaptobrevins, endobrevin is abundantly expressed in kidney, moderately expressed in heart and spleen, and slightly expressed in brain, thymus and liver. Endobrevin interacts specifically with the SNAPs, most likely through an endobrevin-containing SNARE complex.

Inhibitor · Natural Compounds · Compound Libraries · Recombinant Proteins

This product is for Research Use Only · Not for Human or Veterinary or Therapeutic Use

Tel: 781-999-4286 E_mail: info@targetmol.com Address: 34 Washington Street, Wellesley Hills, MA 02481