

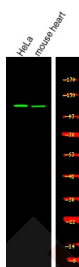
## Anti-Phospho-USP28 (Ser67) Polyclonal Antibody

### Product Details

Ig Type:	IgG
Reactivity:	Human
Conjugation:	Unconjugated
Molecular Weight:	Theoretical: 122 kDa.
Purification:	Antibodies were produced by immunizing rabbits with synthetic phosphopeptide and KLH conjugates. Antibodies were purified by affinity-chromatography using epitope-specific phosphopeptide. Non-phospho specific antibodies were removed by chromatography using non-phosphopeptide.

### Applications

Verified Activity: 1. Western Blot analysis of lysates of Hela and mouse heart, using primary antibody at 1:1000 dilution.



Application: WB  
 Recommended WB: 1:1000

### Properties

Stability & Storage: Store at -20°C or -80°C for 12 months. Avoid repeated freeze-thaw cycles.  
 Shipping: Shipping with blue ice.

### Antigen Details

Immunogen: A synthesized phosphopeptide: human USP28 around the phosphorylation site of Ser67  
 Antigen Species: Human  
 Uniprot ID: Q96RU2  
 Synonyms: USP28 (p-Ser67);p-USP28 (S67);p-USP28 (Ser67);USP28 (p-S67)

**Inhibitor · Natural Compounds · Compound Libraries · Recombinant Proteins**

This product is for Research Use Only. Not for Human or Veterinary or Therapeutic Use

Tel:781-999-4286 E\_mail:info@targetmol.com Address:34 Washington Street,Wellesley Hills,MA 02481