

## Anti-UQCRFS1 Antibody (8G153)

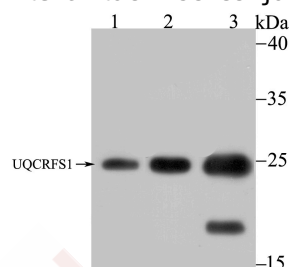
## Product Details

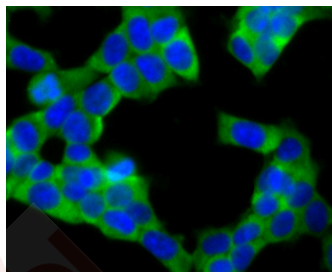
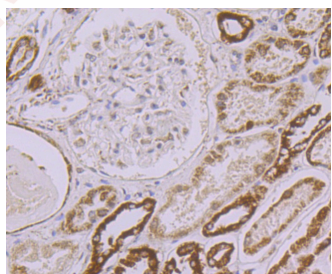
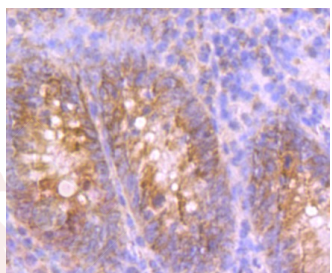
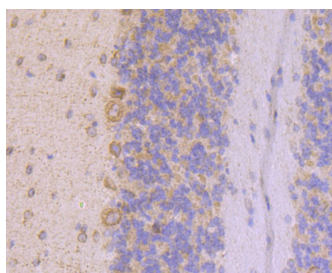
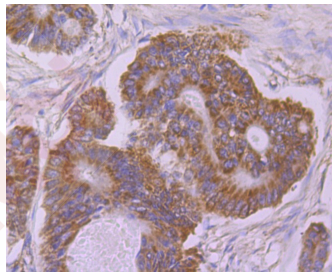
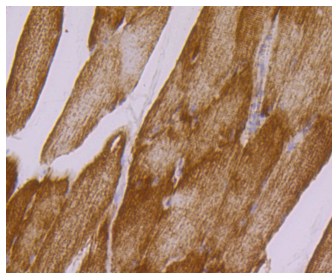
Ig Type:	IgG
Reactivity:	Human,Mouse,Rat
Conjugation:	Unconjugated
Molecular Weight:	Theoretical: 21 kDa.
Clone:	8G153
Purification:	ProA affinity purified

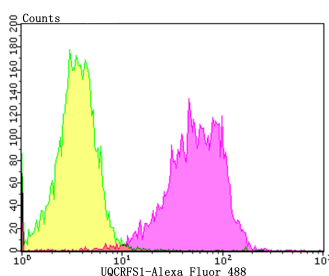
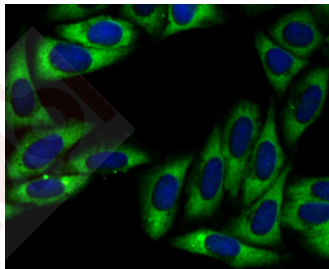
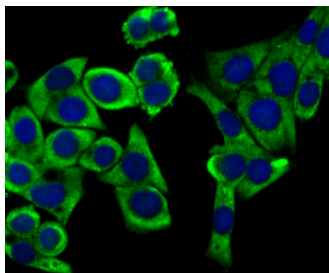
## Applications

1. Western blot analysis of UQCRFS1 on different lysates using anti-UQCRFS1 antibody at 1/1,000 dilution. Positive control: Lane 1: A549, Lane 2: 293, Lane 3: Mouse kidney.
2. Immunohistochemical analysis of paraffin-embedded rat skeletal muscle tissue using anti-UQCRFS1 antibody. Counter stained with hematoxylin.
3. Immunohistochemical analysis of paraffin-embedded human colon cancer tissue using anti-UQCRFS1 antibody. Counter stained with hematoxylin.
4. Immunohistochemical analysis of paraffin-embedded mouse cerebellum tissue using anti-UQCRFS1 antibody. Counter stained with hematoxylin.
5. Immunohistochemical analysis of paraffin-embedded human appendix tissue using anti-UQCRFS1 antibody. Counter stained with hematoxylin.
6. Immunohistochemical analysis of paraffin-embedded human kidney tissue using anti-UQCRFS1 antibody. Counter stained with hematoxylin.
7. ICC staining UQCRFS1 in 293T cells (green). The nuclear counter stain is DAPI (blue). Cells were fixed in paraformaldehyde, permeabilised with 0.25% Triton X100/PBS.
8. ICC staining UQCRFS1 in LOVO cells (green). The nuclear counter stain is DAPI (blue). Cells were fixed in paraformaldehyde, permeabilised with 0.25% Triton X100/PBS.
9. ICC staining UQCRFS1 in SiHa cells (green). The nuclear counter stain is DAPI (blue). Cells were fixed in paraformaldehyde, permeabilised with 0.25% Triton X100/PBS.
10. Flow cytometric analysis of A549 cells with UQCRFS1 antibody at 1/100 dilution (yellow) compared with an unlabelled control (cells without incubation with primary antibody; purple). Alexa Fluor 488-conjugated goat anti-rabbit IgG was used as the secondary antibody.

## Verified Activity:







Application: FCM,ICC,IF,IHC,IP,WB

Recommended WB: 1:500-2000; IHC: 1:50-200; ICC: 1:500-2000; FCM: 1:10-50

### Properties

Stability & Storage: Store at -20°C or -80°C for 12 months. Avoid repeated freeze-thaw cycles.

Shipping: Shipping with blue ice.

### Antigen Details

Immunogen: Recombinant Protein: human UQCRRFS1 aa 100 to the C-terminus

Antigen Species: human

Uniprot ID: P47985

Synonyms:

Ubiquinol-cytochrome c reductase 8 kDa protein;PGR1;Ubiquinol cytochrome c reductase Rieske iron-sulfur polypeptide 1;Cytochrome b c1 complex subunit Rieske mitochondrial;RIS1; Proton gradient regulation protein 1;Ubiquinol cytochrome C reductase rieske iron sulphur; Ubiquinol-cytochrome c reductase iron-sulfur subunit;UQCR5;UCRI\_HUMAN;Cytochrome b6f complex iron sulfur subunit, chloroplastic;Cytochrome b-c1 complex subunit 11;Cytochrome b-c1 complex subunit 5;Rieske iron-sulfur protein;petC;Complex III subunit IX; Plastohydroquinone:plastocyanin oxidoreductase iron sulfur protein;RIP1;RISP;UQCRRFS 1; Complex III subunit 5;Rieske iron sulfur protein

### Research Background

Cytochrome b-c1 complex subunit Rieske, mitochondrial: Component of the mitochondrial ubiquinol-cytochrome c reductase complex dimer (complex III dimer), which is a respiratory chain that generates an electrochemical potential coupled to ATP synthesis. Incorporation of UQCRRFS1 is the penultimate step in complex III assembly.

**Inhibitor · Natural Compounds · Compound Libraries · Recombinant Proteins**

This product is for Research Use Only · Not for Human or Veterinary or Therapeutic Use

Tel:781-999-4286 E\_mail:info@targetmol.com Address:34 Washington Street,Wellesley Hills,MA 02481