

Anti-Ubiquitin Activating Enzyme E1/UBA1 Antibody (1V154)

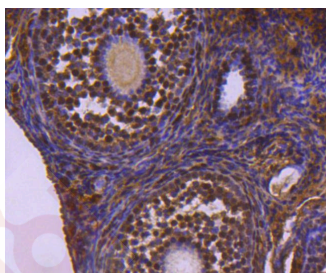
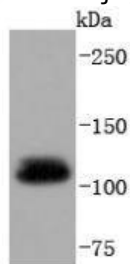
Product Details

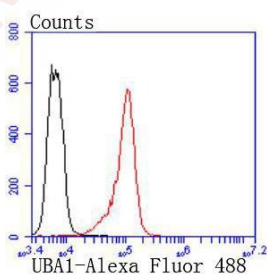
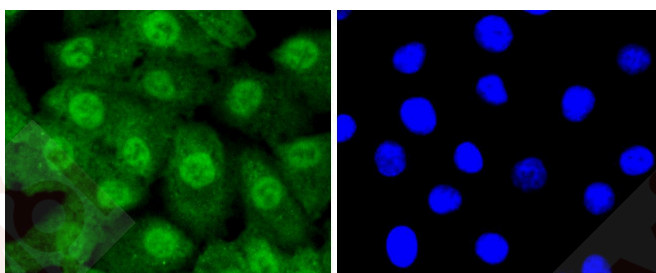
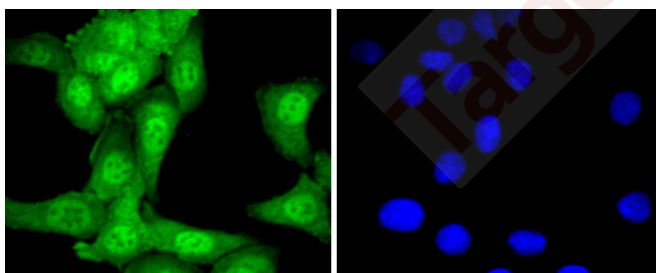
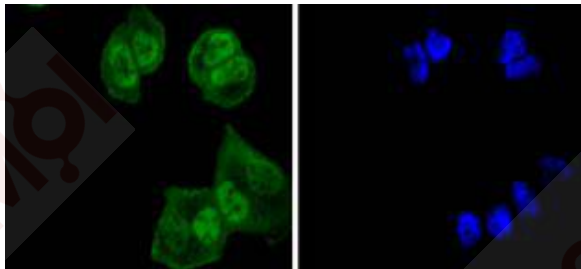
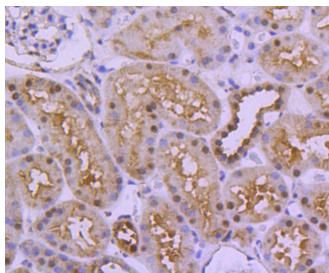
Ig Type:	IgG
Reactivity:	Human,Mouse,Rat
Conjugation:	Unconjugated
Molecular Weight:	Theoretical: 118 kDa.
Clone:	1V154
Purification:	ProA affinity purified

Applications

Verified Activity:

1. Western blot analysis of UBA1 on mouse liver lysates using anti-UBA1 antibody at 1/5,000 dilution.
2. Immunohistochemical analysis of paraffin-embedded mouse ovary tissue using anti-UBA1 antibody. Counter stained with hematoxylin.
3. Immunohistochemical analysis of paraffin-embedded human kidney tissue using anti-UBA1 antibody. Counter stained with hematoxylin.
4. ICC staining UBA1 in Hela cells (green). The nuclear counter stain is DAPI (blue). Cells were fixed in paraformaldehyde, permeabilised with 0.25% Triton X100/PBS.
5. ICC staining UBA1 in SKOV-3 cells (green). The nuclear counter stain is DAPI (blue). Cells were fixed in paraformaldehyde, permeabilised with 0.25% Triton X100/PBS.
6. ICC staining UBA1 in A549 cells (green). The nuclear counter stain is DAPI (blue). Cells were fixed in paraformaldehyde, permeabilised with 0.25% Triton X100/PBS.
7. Flow cytometric analysis of K562 cells with UBA1 antibody at 1/50 dilution (red) compared with an unlabelled control (cells without incubation with primary antibody; black). Alexa Fluor 488-conjugated goat anti rabbit IgG was used as the secondary antibody.





Application: FCM, ICC/IF, IHC, WB

Recommended WB: 1:1000-2000; IHC: 1:100-500; ICC/IF: 1:50-200; FCM: 1:50-100

Properties

Stability & Storage: Store at -20°C or -80°C for 12 months. Avoid repeated freeze-thaw cycles.

Shipping: Shipping with blue ice.

Antigen Details

Immunogen:	Recombinant Protein
Uniprot ID:	P22314
Synonyms:	UBE1X;SMAX2;A1S9;A1ST;CFAP124;GXP1;POC20;CTD-2522E6.1;AMCX1;UBA1A;A1S9T;UBE1; ubiquitin-like modifier activating enzyme 1

Research Background

The ubiquitin activating enzyme E1 (UBE1) catalyzes the first step in ubiquitin conjugation to mark cellular proteins for degradation. Specifically, UBE1 functions to adenylate the C-terminal glycine residue of ubiquitin, a reaction that is ATP-dependent and is preceded by the formation of a thiolester bond with a cysteine residue of UBE1. The UBE1-activated ubiquitin is then transferred to a ubiquitin conjugated enzyme, which donates the ubiquitin residue to target substrates. The UBE1 gene is an example of an X-Y homologous gene, which is X-linked with a distinct Y-linked gene in many mammals. However, no UBE1 homolog is detectable on the human Y chromosome. UBE1 is thought to escape X inactivation in humans.

Inhibitor · Natural Compounds · Compound Libraries · Recombinant Proteins

This product is for Research Use Only · Not for Human or Veterinary or Therapeutic Use

Tel:781-999-4286 E_mail:info@targetmol.com Address:34 Washington Street,Wellesley Hills,MA 02481