

Anti-Phospho-Tyrosine Hydroxylase (Ser40) Polyclonal Antibody

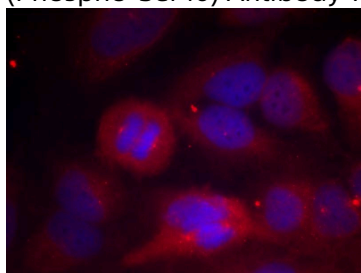
Product Details

Ig Type:	IgG
Reactivity:	Human,Mouse,Rat
Conjugation:	Unconjugated
Purification:	Antibodies were produced by immunizing rabbits with synthetic phosphopeptide and KLH conjugates. Antibodies were purified by affinity-chromatography using epitope-specific phosphopeptide. Non-phospho specific antibodies were removed by chromatography using non-phosphopeptide.

Applications

Verified Activity:

1. Immunofluorescence staining of methanol-fixed Hela cells using Tyrosine Hydroxylase (Phospho-Ser40) Antibody TMAC-04181.



Application: IF

Properties

Stability & Storage:	Store at 2°C-8°C for 1 month. Store at -20°C or -80°C for 12 months. Avoid repeated freeze-thaw cycles.
Shipping:	Shipping with blue ice.

Antigen Details

Immunogen:	Peptide sequence around phosphorylation site of serine 40 (R-Q-S(p)-L-I) derived from Human Tyrosine Hydroxylase (TH)
Antigen Species:	Human
Uniprot ID:	P07101
Synonyms:	p-Tyrosine Hydroxylase (Ser40);Tyrosine Hydroxylase (p-Ser40);p-Tyrosine Hydroxylase (S40); Tyrosine Hydroxylase (p-S40)

Research Background

The protein encoded by Tyrosine Hydroxylase is involved in the conversion of tyrosine to dopamine. It is the rate-limiting enzyme in the synthesis of catecholamines, hence plays a key role in the physiology of adrenergic neurons. Mutations in this gene have been associated with autosomal recessive Segawa syndrome. Alternatively spliced transcript variants encoding different isoforms have been noted for this gene.

Inhibitor · Natural Compounds · Compound Libraries · Recombinant Proteins

This product is for Research Use Only · Not for Human or Veterinary or Therapeutic Use

Tel:781-999-4286 E_mail:info@targetmol.com Address:34 Washington Street,Wellesley Hills,MA 02481