

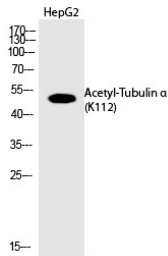
Anti-Acetyl-Tubulin α (Lys112) Polyclonal Antibody

Product Details

Ig Type:	IgG
Reactivity:	Human,Mouse,Rat
Conjugation:	Unconjugated
Molecular Weight:	Actual: 50 kDa.
Purification:	The antibody was affinity-purified from rabbit antiserum by affinity-chromatography using epitope-specific immunogen.

Applications

Verified Activity: 1. Western Blot analysis of HepG2 cells using Acetyl-Tubulin α (K112) Polyclonal Antibody.



Application:	ELISA,WB
Recommended	WB: 1:500-2000; ELISA: 1:20000

Properties

Stability & Storage:	Store at -20°C or -80°C for 12 months. Avoid repeated freeze-thaw cycles.
Shipping:	Shipping with blue ice.

Antigen Details

Immunogen:	A synthesized acetylpeptide: human Tubulin α around the acetylation site of K112
Antigen Species:	Human
Uniprot ID:	Q86UQ8
Synonyms:	Ac-Tubulin α (Lys112);Ac-Tubulin α (K112);Ac-Tubulin α K112;Tubulin α K112ac;Acetyl-Tubulin α (K112);Tubulin α K112-acetylated

Inhibitor · Natural Compounds · Compound Libraries · Recombinant Proteins

This product is for Research Use Only. Not for Human or Veterinary or Therapeutic Use

Tel:781-999-4286 E_mail:info@targetmol.com Address:34 Washington Street,Wellesley Hills,MA 02481