

Anti-TUBB3 Antibody (5D159)

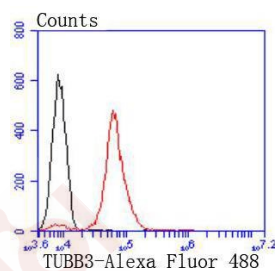
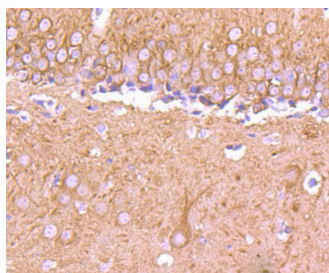
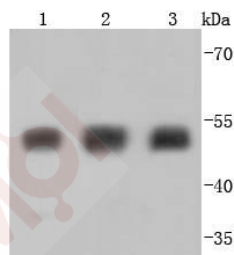
Product Details

Ig Type:	IgG
Reactivity:	Human,Mouse,Rat
Conjugation:	Unconjugated
Molecular Weight:	Theoretical: 50 kDa.
Clone:	5D159
Purification:	ProA affinity purified

Applications

Verified Activity:

1. Western blot analysis of Tubulin beta-III on different lysates using anti-Tubulin beta-III antibody at 1/1,000 dilution. Positive control: Lane 1: HeLa, Lane 2: PC-12, Lane 3: SH-SY-5Y.
2. Immunohistochemical analysis of paraffin-embedded mouse brain tissue using anti-Tubulin beta-III antibody. Counter stained with hematoxylin.
3. Flow cytometric analysis of N2A cells with Tubulin beta-III antibody at 1/50 dilution (red) compared with an unlabelled control (cells without incubation with primary antibody; black). Alexa Fluor 488-conjugated goat anti rabbit IgG was used as the secondary antibody.



Application: FCM,IHC,IP,WB

Recommended WB: 1:1000-2000; IHC: 1:50-200; ICC: 1:50-200; FCM: 1:50-100

Properties

Stability & Storage: Store at -20°C or -80°C for 12 months. Avoid repeated freeze-thaw cycles.

Shipping: Shipping with blue ice.

Antigen Details

Immunogen: Recombinant Protein

Uniprot ID: Q13509

Synonyms: Tubulin beta-4 chain;Tubulin beta-3 chain;Tubulin beta-III;TUBB4;TUBB3

Research Background

Tubulin is a major cytoskeleton component that has five distinct forms, designated α , β , γ , δ , and ϵ Tubulin. α and β Tubulins form heterodimers which multimerize to form a microtubule filament. Multiple β Tubulin isoforms (β 1, β 2, β 3, β 4, β 5, β 6 and β 8) have been characterized and are expressed in mammalian tissues. β 1 and β 4 are present throughout the cytosol, β 2 is present in the nuclei and nucleoplasm, and β 3 is a neuron-specific cytoskeletal protein. γ Tubulin forms the γ masome, which is required for nucleating microtubule filaments at the centrosome. Both δ Tubulin and ϵ Tubulin are associated with the centrosome. δ Tubulin is a homolog of the Chlamydomonas δ Tubulin Uni3 and is found in association with the centrioles, whereas ϵ Tubulin localizes to the pericentriolar material. ϵ Tubulin exhibits a cell-cycle-specific pattern of localization, first associating with only the older of the centrosomes in a newly duplicated pair and later associating with both centrosomes.

Inhibitor · Natural Compounds · Compound Libraries · Recombinant Proteins

This product is for Research Use Only · Not for Human or Veterinary or Therapeutic Use

Tel:781-999-4286 E_mail:info@targetmol.com Address:34 Washington Street,Wellesley Hills,MA 02481
