

Anti-Tuberin Antibody (9I375)

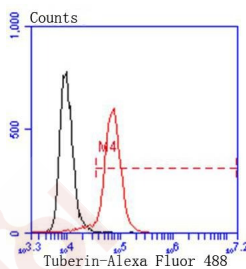
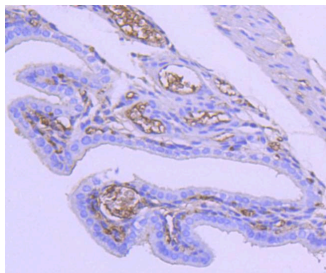
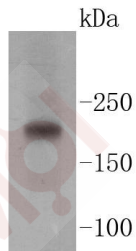
Product Details

Ig Type:	IgG
Reactivity:	Human,Mouse,Rat
Conjugation:	Unconjugated
Molecular Weight:	Theoretical: 200 kDa.
Clone:	9I375
Purification:	ProA affinity purified

Applications

Verified Activity:

1. Western blot analysis of Tuberin on Jurkat cell lysates using anti-Tuberin antibody at 1/1,000 dilution.
2. Immunohistochemical analysis of paraffin-embedded mouse placenta tissue using anti-Tuberin antibody. Counter stained with hematoxylin.
3. Flow cytometric analysis of Hela cells with Tuberin antibody at 1/50 dilution (red) compared with an unlabelled control (cells without incubation with primary antibody; black). Alexa Fluor 488-conjugated goat anti rabbit IgG was used as the secondary antibody.



Application:	FCM,IHC,WB
Recommended	WB: 1:1000-2000; IHC: 1:50-200; FCM: 1:50-100

Properties

Stability & Storage: Store at -20°C or -80°C for 12 months. Avoid repeated freeze-thaw cycles.

Shipping: Shipping with blue ice.

Antigen Details

Immunogen: Recombinant Protein

Uniprot ID: P49815

Synonyms: PPP1R160;OTTHUMP00000198394;tsc2;TSC4, formerly;Protein phosphatase 1, regulatory subunit 160;FLJ43106;Tuberous sclerosis 2 protein homolog;LAM;TSC2_HUMAN;Tuberous sclerosis 2;TSC4;TSC4 gene, formerly;OTTHUMP00000158940;Tuberin;Tuberous sclerosis 2 protein;OTTHUMP00000198395

Research Background

Tuberous sclerosis complex (TSC) is an autosomal dominant genetic disorder characterized by mental retardation and the widespread development of distinctive tumors termed hamartomas. Two different genetic loci have been linked to TSC; one of these loci, the tuberous sclerosis-2 gene (TSC2), encodes a protein called tuberin and the other loci, tuberous sclerosis-1 gene (TSC1), encodes a protein called hamartin. Tuberin and hamartin interact with each other forming a cytoplasmic complex. Hamartin interacts with the ezrin-radixin-moesin (ERM) family of actin-binding proteins and inhibition of hamartin activity results in loss of cell adhesion. Hamartin is present in most adult tissues with strong expression in brain, heart, and kidney.

Inhibitor · Natural Compounds · Compound Libraries · Recombinant Proteins

This product is for Research Use Only · Not for Human or Veterinary or Therapeutic Use

Tel:781-999-4286 E_mail:info@targetmol.com Address:34 Washington Street,Wellesley Hills,MA 02481