

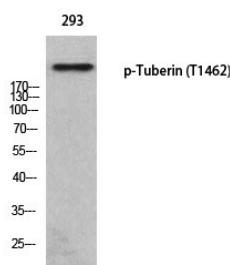
Anti-Phospho-Tuberin (Thr1462) Polyclonal Antibody

Product Details

Ig Type:	IgG
Reactivity:	Human,Mouse,Rat
Conjugation:	Unconjugated
Molecular Weight:	Actual: 200 kDa.
Purification:	The antibody was affinity-purified from rabbit antiserum by affinity-chromatography using epitope-specific immunogen.

Applications

Verified Activity: 1. Western blot analysis of 293 using p-Tuberin (T1462) antibody.



Application: ELISA,IF,IHC,WB
Recommended WB: 1:500-2000; IHC: 1:100-300;IF: 1:200-1000;ELISA: 1:5000

Properties

Stability & Storage: Store at -20°C or -80°C for 12 months. Avoid repeated freeze-thaw cycles.
Shipping: Shipping with blue ice.

Antigen Details

Immunogen: A synthesized phosphopeptide: human Tuberin around the phosphorylation site of T1462
Antigen Species: Human
Uniprot ID: P49815
Synonyms: p-Tuberin (T1462);Tuberin (p-T1462);p-Tuberin (Thr1462);Tuberin (p-Thr1462)

Inhibitor · Natural Compounds · Compound Libraries · Recombinant Proteins

This product is for Research Use Only. Not for Human or Veterinary or Therapeutic Use

Tel:781-999-4286 E_mail:info@targetmol.com Address:34 Washington Street,Wellesley Hills,MA 02481