

Anti-TUBB3 Polyclonal Antibody 3

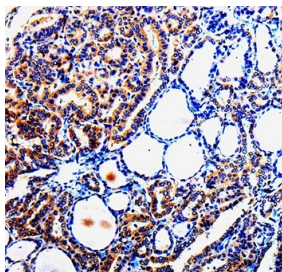
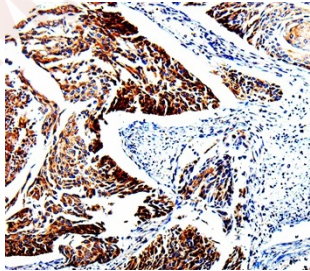
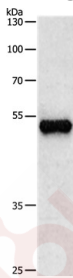
Product Details

Ig Type:	IgG
Reactivity:	Human,Mouse,Rat
Conjugation:	Unconjugated
Molecular Weight:	Actual: 50 kDa.
Purification:	Antigen affinity purification.

Applications

Verified Activity:

1. Gel: 8%SDS-PAGE, Lysate: 30ug Human brain glioma tissue, Primary antibody: 1/500 dilution, Secondary antibody dilution: 1/8000, Exposure time: 10 seconds.
2. Immunohistochemical analysis of paraffin-embedded Human cervical cancer tissue using TMAC-04154 at dilution 1/25.
3. Immunohistochemical analysis of paraffin-embedded Human thyroid cancer tissue using TMAC-04154 at dilution 1/25.



Application:	IHC,WB
Recommended	WB: 1:500-1000; IHC: 1:25-50

Properties

Stability & Storage: Store at -20°C or -80°C for 12 months. Avoid repeated freeze-thaw cycles.

Shipping: Shipping with blue ice.

Antigen Details

Immunogen: Fusion protein corresponding to a region derived from internal residues of human Tubulin beta-3 chain

Antigen Species: Human

Uniprot ID: Q13509

Synonyms: Tubulin beta-4 chain;Tubulin beta-3 chain;TUBB4;Tubulin beta-III;TUBB3

Research Background

This gene encodes a class III member of the beta tubulin protein family. Beta tubulins are one of two core protein families (alpha and beta tubulins) that heterodimerize and assemble to form microtubules. This protein is primarily expressed in neurons and may be involved in neurogenesis and axon guidance and maintenance. Mutations in this gene are the cause of congenital fibrosis of the extraocular muscles type 3. Alternate splicing results in multiple transcript variants. A pseudogene of this gene is found on chromosome 6

Inhibitor · Natural Compounds · Compound Libraries · Recombinant Proteins

This product is for Research Use Only · Not for Human or Veterinary or Therapeutic Use

Tel:781-999-4286 E_mail:info@targetmol.com Address:34 Washington Street,Wellesley Hills,MA 02481
