

Anti-TUBA8 Antibody (8N451)

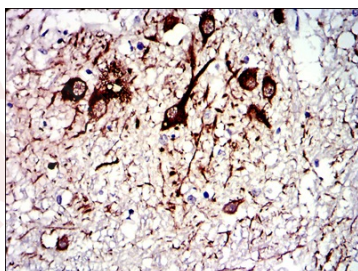
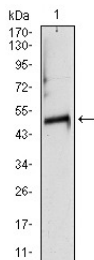
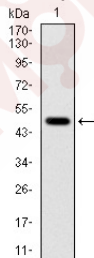
Product Details

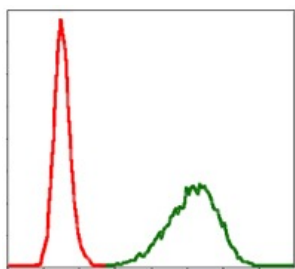
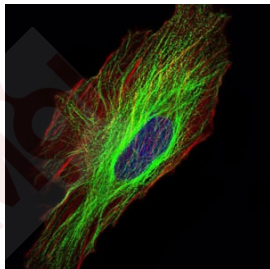
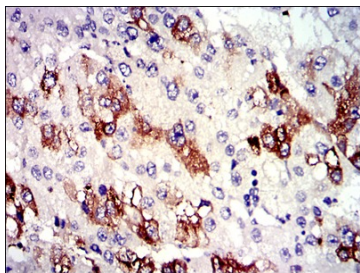
Reactivity:	Human,Rat
Conjugation:	Unconjugated
Molecular Weight:	Theoretical: 50 kDa.
Clone:	8N451
Purification:	ProA affinity purified

Applications

Verified Activity:

1. Western blot analysis of TUBA8 on human TUBA8 recombinant protein using anti-TUBA8 antibody at 1/1,000 dilution.
2. Western blot analysis of TUBA8 on at heart tissue lysate using anti-TUBA8 antibody at 1/1,000 dilution.
3. Immunohistochemical analysis of paraffin-embedded medulla oblongata tissues?using anti-TUBA8 antibody. Counter stained with hematoxylin.
4. Immunohistochemical analysis of paraffin-embedded liver cancer tissues using anti-TUBA8 antibody. Counter stained with hematoxylin.
5. ICC staining TUBA8 (green) and actin filaments (red) in Hela cells. The nuclear counter stain is DAPI (blue). Cells were fixed in paraformaldehyde, permeabilised with 0.25% Triton X100/PBS.
6. Flow cytometric analysis of NIH/3T3 cells with TUBA8 antibody at 1/100 dilution (green) compared with an unlabelled control (cells without incubation with primary antibody; red).





Application: FCM, ICC, IHC, WB

Recommended WB: 1:500-2000; IHC: 1:100-500; ICC: 1:100-500; FCM: 1:100-200

Properties

Stability & Storage: Store at -20°C or -80°C for 12 months. Avoid repeated freeze-thaw cycles.

Shipping: Shipping with blue ice.

Antigen Details

Immunogen: Recombinant Protein

Uniprot ID: Q9NY65

Synonyms: TUBAL2; Tubulin alpha chain-like 2; Alpha tubulin 8; Tuba 8; TBA8_HUMAN; Tubulin alpha chain like 2; Tubulin alpha 8 chain; Alpha-tubulin 8; Tubulin alpha-8 chain

Research Background

Tubulin is a major cytoskeleton component that has five distinct forms, designated α , β , γ , δ and ϵ Tubulin. α and β Tubulins form heterodimers which multimerize to form a microtubule filament. Multiple β Tubulin isoforms ($\beta 1$, $\beta 2$, $\beta 3$, $\beta 4$, $\beta 5$, $\beta 6$ and $\beta 8$) have been characterized and are expressed in mammalian tissues. γ Tubulin forms the gammasome, which is required for nucleating microtubule filaments at the centrosome. Both δ Tubulin and ϵ Tubulin are associated with the centrosome. δ Tubulin is a homolog of the *Chlamydomonas* δ Tubulin Uni3 and is found in association with the centrioles, whereas ϵ Tubulin localizes to the pericentriolar material. ϵ Tubulin exhibits a cell-cycle-specific pattern of localization, first associating with only the older of the centrosomes in a newly duplicated pair and later associating with both centrosomes.

Inhibitor · Natural Compounds · Compound Libraries · Recombinant Proteins

This product is for Research Use Only · Not for Human or Veterinary or Therapeutic Use

Tel: 781-999-4286 E_mail: info@targetmol.com Address: 34 Washington Street, Wellesley Hills, MA 02481