

Anti-TGM2 Antibody (9X389)

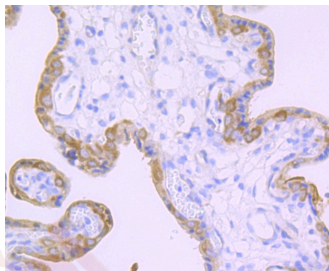
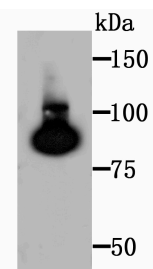
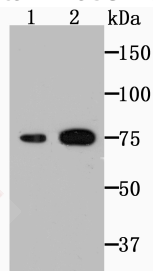
Product Details

Ig Type:	IgG
Reactivity:	Human,Mouse
Conjugation:	Unconjugated
Molecular Weight:	Theoretical: 77 kDa.
Clone:	9X389
Purification:	ProA affinity purified

Applications

Verified Activity:

1. Western blot analysis of Transglutaminase 2 on mouse placenta (1) and lung tissue lysates using anti-Transglutaminase 2 antibody at 1/500 dilution.
2. Western blot analysis of Transglutaminase 2 on HUVEC cell lysates using anti-Transglutaminase 2 antibody at 1/500 dilution.
3. Immunohistochemical analysis of paraffin-embedded human placenta tissue using anti-Transglutaminase 2 antibody. Counter stained with hematoxylin.



Application: IHC,IP,WB

Recommended WB: 1:500-2000; IHC: 1:50-200

Properties

Stability & Storage: Store at -20°C or -80°C for 12 months. Avoid repeated freeze-thaw cycles.

Shipping: Shipping with blue ice.

Antigen Details

Immunogen: Recombinant Protein

Uniprot ID: P21980

Synonyms: TGC;G-ALPHA-h;G- α -h;GNAH;HEL-S-45;transglutaminase 2;TG2

Research Background

Terminally differentiating mammalian epidermal cells acquire an insoluble, 10 to 20 nm thick protein deposit on the intracellular surface of the plasma membrane known as the cross-linked cell envelope (CE). The CE is a component of the epidermis that is generated through formation of disulfide bonds and γ -glutamyl-lysine isodipeptide bonds, which are formed by the action of transglutaminases (TGases). TGases are intercellularly localizing, Ca²⁺-dependent enzymes that catalyze the formation of isopeptide bonds by transferring an amine on to glutamyl residues, thereby cross-linking glutamine residues and lysine residues in substrate proteins. TGases influence numerous biological processes, including blood coagulation, epidermal differentiation, seminal fluid coagulation, fertilization, cell differentiation and apoptosis. Human keratinocyte transglutaminase (TGase1) is a membrane associated, 817 amino acid protein. Human tissue transglutaminase (TGase2) is an endothelial cell specific, 687 amino acid protein.

Inhibitor · Natural Compounds · Compound Libraries · Recombinant Proteins

This product is for Research Use Only · Not for Human or Veterinary or Therapeutic Use

Tel:781-999-4286 E_mail:info@targetmol.com Address:34 Washington Street,Wellesley Hills,MA 02481