

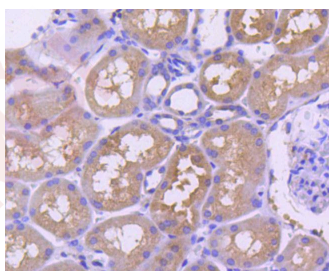
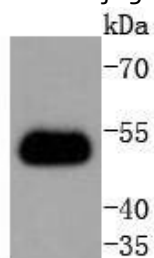
## Anti-TRAF2 Antibody (6B229)

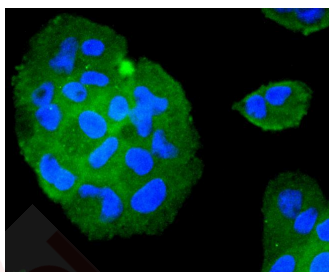
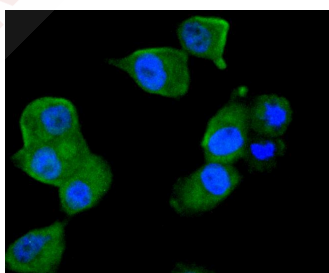
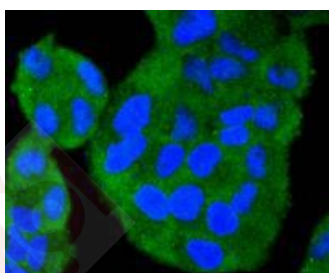
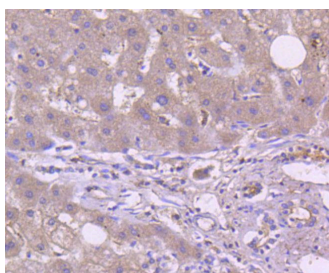
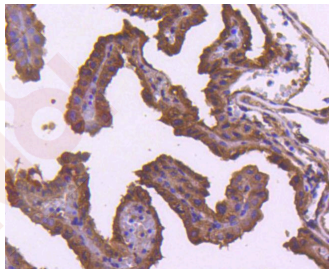
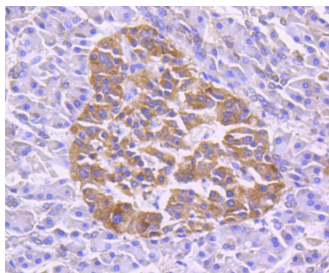
## Product Details

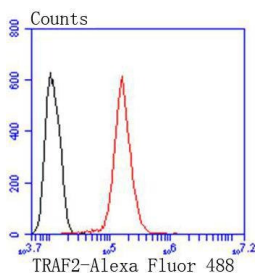
Ig Type:	IgG
Reactivity:	Human,Mouse,Rat
Conjugation:	Unconjugated
Molecular Weight:	Theoretical: 56 kDa.
Clone:	6B229
Purification:	ProA affinity purified

## Applications

- Verified Activity:
1. Western blot analysis of TRAF2 on Hela cells lysates using anti-TRAF2 antibody at 1/1,000 dilution.
  2. Immunohistochemical analysis of paraffin-embedded human kidney tissue using anti-TRAF2 antibody. Counter stained with hematoxylin.
  3. Immunohistochemical analysis of paraffin-embedded human pancreas tissue using anti-TRAF2 antibody. Counter stained with hematoxylin.
  4. Immunohistochemical analysis of paraffin-embedded mouse placenta tissue using anti-TRAF2 antibody. Counter stained with hematoxylin.
  5. Immunohistochemical analysis of paraffin-embedded human liver tissue using anti-TRAF2 antibody. Counter stained with hematoxylin.
  6. ICC staining TRAF2 in Hela cells (green). The nuclear counter stain is DAPI (blue). Cells were fixed in paraformaldehyde, permeabilised with 0.25% Triton X100/PBS.
  7. ICC staining TRAF2 in PANC-1 cells (green). The nuclear counter stain is DAPI (blue). Cells were fixed in paraformaldehyde, permeabilised with 0.25% Triton X100/PBS.
  8. ICC staining TRAF2 in RH-35 cells (green). The nuclear counter stain is DAPI (blue). Cells were fixed in paraformaldehyde, permeabilised with 0.25% Triton X100/PBS.
  9. Flow cytometric analysis of Hela cells with TRAF2 antibody at 1/50 dilution (red) compared with an unlabelled control (cells without incubation with primary antibody; black). Alexa Fluor 488-conjugated goat anti rabbit IgG was used as the secondary antibody.







Application: FCM,ICC/IF,IHC,IP,WB

Recommended WB: 1:1000-5000; IHC: 1:50-200; ICC/IF: 1:50-200; FCM: 1:50-100

### Properties

Stability & Storage: Store at -20°C or -80°C for 12 months. Avoid repeated freeze-thaw cycles.

Shipping: Shipping with blue ice.

### Antigen Details

Immunogen: Recombinant Protein

Uniprot ID: Q12933

Synonyms: RING-type E3 ubiquitin transferase TRAF2;TRAP3;Tumor necrosis factor type 2 receptor-associated protein 3;TRAF 2;TNF receptor-associated factor 2;EC 2.3.2.27;E3 ubiquitin-protein ligase TRAF2

### Research Background

Tumor necrosis factor (TNF)-activated cell signaling is mediated primarily through the TNF receptor 1 (TNF-R1) and, to a lesser extent, TNF-R2. Both TNF receptors are members of the expanding TNF receptor superfamily, which includes the FAS antigen and CD40. Potential insight into an understanding of TNF receptor-mediated signaling was provided by the identification of two related proteins, TRAF1 and TRAF2 (for TNF receptor-associated factors 1 and 2, respectively). Both function to form heterodimeric complexes and associate with the cytoplasmic domain of TNF-R2. A third member of this protein family, alternatively designated CD40 bp, CRAF1, LAP1 or TRAF3, has been identified and shown to associate with the cytoplasmic domain of CD40. The similarity between a specific region of TRAF3 with regions of TRAF1 and TRAF2 define a TRAF-C domain that is necessary and sufficient for CD40 binding and homodimerization.

**Inhibitor · Natural Compounds · Compound Libraries · Recombinant Proteins**

This product is for Research Use Only · Not for Human or Veterinary or Therapeutic Use

Tel:781-999-4286 E\_mail:info@targetmol.com Address:34 Washington Street,Wellesley Hills,MA 02481