

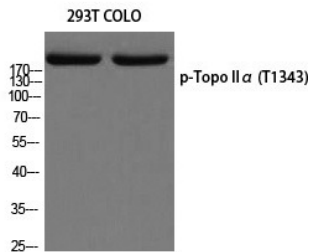
Anti-Phospho-TOP2A (Thr1343) Polyclonal Antibody

Product Details

Ig Type:	IgG
Reactivity:	Human
Conjugation:	Unconjugated
Molecular Weight:	Actual: 190 kDa.
Purification:	The antibody was affinity-purified from rabbit antiserum by affinity-chromatography using epitope-specific immunogen.

Applications

Verified Activity: 1. Western blot analysis of 293T COLO using p-Topo II α (T1343) antibody.



Application:	ELISA,WB
Recommended	WB: 1:500-2000; ELISA: 1:5000

Properties

Stability & Storage:	Store at -20°C or -80°C for 12 months. Avoid repeated freeze-thaw cycles.
Shipping:	Shipping with blue ice.

Antigen Details

Immunogen:	A synthesized phosphopeptide: human Topo II α around the phosphorylation site of T1343
Antigen Species:	Human
Uniprot ID:	P11388
Synonyms:	p-TOP2A (T1343);TOP2A (p-T1343);p-TOP2A (Thr1343);TOP2A (p-Thr1343)

Inhibitor · Natural Compounds · Compound Libraries · Recombinant Proteins

This product is for Research Use Only. Not for Human or Veterinary or Therapeutic Use

Tel:781-999-4286 E_mail:info@targetmol.com Address:34 Washington Street,Wellesley Hills,MA 02481