

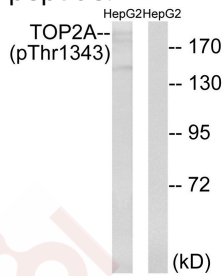
Anti-Phospho-TOP2A (Thr1343) Polyclonal Antibody 2

Product Details

Ig Type:	IgG
Reactivity:	Human
Conjugation:	Unconjugated
Molecular Weight:	Actual: 190 kDa.
Purification:	Antibodies were produced by immunizing rabbits with synthetic phosphopeptide and KLH conjugates. Antibodies were purified by affinity-chromatography using epitope-specific phosphopeptide. Non-phospho specific antibodies were removed by chromatography using non-phosphopeptide.

Applications

Verified Activity: 1. Western blot analysis of extracts from HepG2 cells treated with Ca²⁺ using TOP2A (Phospho-Thr1343) Antibody TMAC-04081. The lane on the right is treated with the antigen-specific peptide.



Application:	WB
Recommended	WB: 1:500-1000

Properties

Stability & Storage:	Store at -20°C or -80°C for 12 months. Avoid repeated freeze-thaw cycles.
Shipping:	Shipping with blue ice.

Antigen Details

Immunogen:	Peptide sequence around phosphorylation site of threonine1343(E-K-T(p)-D-D) derived from Human TOP2A
Antigen Species:	Human
Uniprot ID:	P11388
Synonyms:	p-TOP2A (Thr1343);TOP2A (p-Thr1343);p-TOP2A (T1343);TOP2A (p-T1343)

Research Background

This gene encodes a DNA topoisomerase, an enzyme that controls and alters the topologic states of DNA during transcription. This nuclear enzyme is involved in processes such as chromosome condensation, chromatid separation, and the relief of torsional stress that occurs during DNA transcription and replication. It catalyzes the transient breaking and rejoining of two strands of duplex DNA which allows the strands to pass through one

another, thus altering the topology of DNA. Two forms of this enzyme exist as likely products of a gene duplication event.

Inhibitor · Natural Compounds · Compound Libraries · Recombinant Proteins

This product is for Research Use Only · Not for Human or Veterinary or Therapeutic Use

Tel:781-999-4286 E_mail:info@targetmol.com Address:34 Washington Street,Wellesley Hills,MA 02481