

Anti-PYCARD Antibody (4C725)

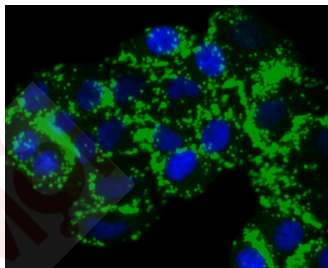
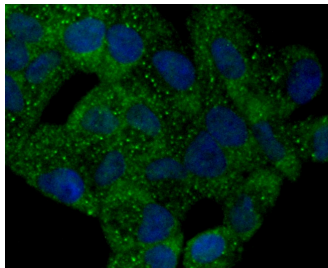
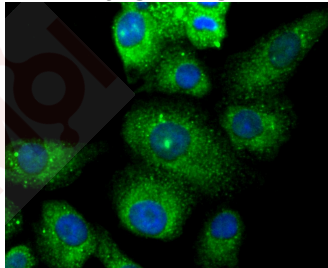
Product Details

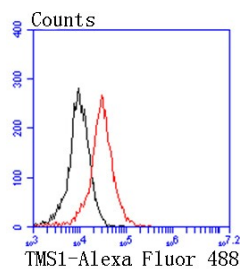
Ig Type:	IgG
Reactivity:	Human
Conjugation:	Unconjugated
Molecular Weight:	Theoretical: 22 kDa.
Clone:	4C725
Purification:	ProA affinity purified

Applications

Verified Activity:

1. ICC staining TMS1 in A549 cells (green). The nuclear counter stain is DAPI (blue). Cells were fixed in paraformaldehyde, permeabilised with 0.25% Triton X100/PBS.
2. ICC staining TMS1 in Hela cells (green). The nuclear counter stain is DAPI (blue). Cells were fixed in paraformaldehyde, permeabilised with 0.25% Triton X100/PBS.
3. ICC staining TMS1 in HepG2 cells (green). The nuclear counter stain is DAPI (blue). Cells were fixed in paraformaldehyde, permeabilised with 0.25% Triton X100/PBS.
4. Flow cytometric analysis of 293 cells with TMS1 antibody at 1/50 dilution (red) compared with an unlabelled control (cells without incubation with primary antibody; black). Alexa Fluor 488-conjugated goat anti rabbit IgG was used as the secondary antibody.





Application: FCM,ICC/IF,WB

Recommended WB: 1:500-1000; ICC/IF: 1:100-500; FCM: 1:50-100

Properties

Stability & Storage: Store at -20°C or -80°C for 12 months. Avoid repeated freeze-thaw cycles.

Shipping: Shipping with blue ice.

Antigen Details

Immunogen: Recombinant Protein

Uniprot ID: Q9ULZ3

Synonyms: hASC;Caspase recruitment domain-containing protein 5;TMS1;CARD5;Apoptosis-associated speck-like protein containing a CARD;PYCARD;Target of methylation-induced silencing 1;ASC;PYD and CARD domain-containing protein

Research Background

The death domain (DD) superfamily of proteins share one or more of the following domains: the DD, DED (death-effector domain), CARD (caspase-recruitment domain) and PYD (Pyrin domain). Each of these domains is characterized by a canonical death domain fold, which consists of a bundle of five or six antiparallel α -helices. As their names suggest, these domains play prominent roles in programmed cell death. Caspase-associated recruitment domains (CARDs) mediate the interaction between adaptor proteins such as Apaf-1 and the proform of caspases (e.g., CASP9) participating in apoptosis. ASC (apoptosis-associated speck-like protein containing a CARD, also known as TMS1 or PYCARD) is a member of the CARD-containing adaptor protein family. ASC is a 195 amino acid protein, containing a N-terminal Pyrin-like domain (PYD) and an 87 residue C-terminal CARD. This motif is characteristic of numerous proteins involved in apoptotic signaling. ASC2 (apoptosis-associated speck-like protein containing a CARD 2), also known as Pyrin-only protein 1 or PADD-only protein 1, is an 89 amino acid member of the DD superfamily that contains one Pyrin domain. Localized to the cytoplasm, ASC2 interacts with ASC to modulate NF- κ B and pro-caspase-1 regulation.

Inhibitor · Natural Compounds · Compound Libraries · Recombinant Proteins

This product is for Research Use Only · Not for Human or Veterinary or Therapeutic Use

Tel:781-999-4286 E_mail:info@targetmol.com Address:34 Washington Street,Wellesley Hills,MA 02481