

## Anti-TLR5 Antibody (3K965)

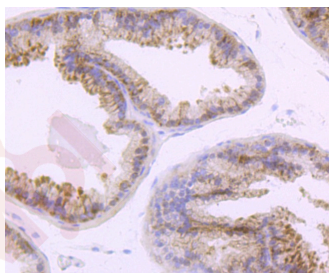
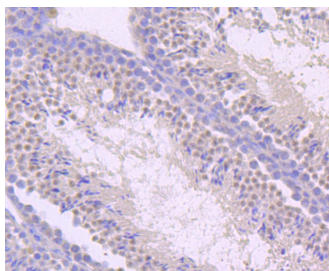
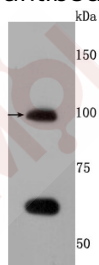
### Product Details

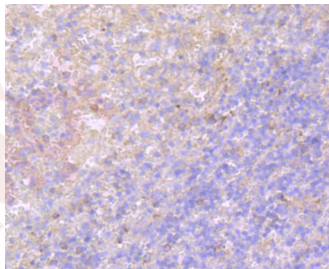
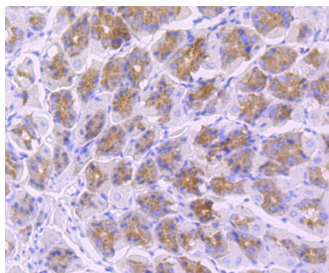
Ig Type:	IgG
Reactivity:	Human,Mouse,Rat
Conjugation:	Unconjugated
Molecular Weight:	Theoretical: 97 kDa.
Clone:	3K965
Purification:	ProA affinity purified

### Applications

#### Verified Activity:

1. Western blot analysis of TLR5 on Hela cells lysates using anti-TLR5 antibody at 1/500 dilution.
2. Immunohistochemical analysis of paraffin-embedded mouse testis tissue using anti-TLR5 antibody. Counter stained with hematoxylin.
3. Immunohistochemical analysis of paraffin-embedded mouse prostate tissue using anti-TLR5 antibody. Counter stained with hematoxylin.
4. Immunohistochemical analysis of paraffin-embedded mouse stomach tissue using anti-TLR5 antibody. Counter stained with hematoxylin.
5. Immunohistochemical analysis of paraffin-embedded human spleen tissue using anti-TLR5 antibody. Counter stained with hematoxylin.





Application: IHC,WB

Recommended WB: 1:1000-2000; IHC: 1:50-200

### Properties

Stability & Storage: Store at -20°C or -80°C for 12 months. Avoid repeated freeze-thaw cycles.

Shipping: Shipping with blue ice.

### Antigen Details

Immunogen: Recombinant Protein

Uniprot ID: O60602

Synonyms: Toll-like receptor 5;Toll/interleukin-1 receptor-like protein 3;TLR 5;TIL3

### Research Background

Six human homologs of the *Drosophila* Toll receptor were initially identified based on their sequence similarities and designated toll-like receptors (TLR). Toll receptors are involved in mediating dorsoventral polarization in the developing *Drosophila* embryo and also participate in the host immunity. The TLR family of proteins are characterized by a highly conserved Toll homology (TH) domain, which is essential for Toll-induced signal transduction. TLR1, as well as the other TLR family members, are type I transmembrane receptors that characteristically contain an extracellular domain consisting of several leucine-rich regions along with a single cytoplasmic Toll/IL-1R-like domain. TLR2 and TLR4 are activated in response to lipopolysacchride (LPS) stimulation, which results in the activation and translocation of NFκB and suggests that these receptors are involved in mediating inflammatory responses. TLR5 specifically participates in the innate immune response to microbial agents. TLR5 is highly expressed in ovary and in peripheral blood leukocytes, most abundantly in monocytes and, to a lesser extent, in prostate and testis.

**Inhibitor · Natural Compounds · Compound Libraries · Recombinant Proteins**

This product is for Research Use Only · Not for Human or Veterinary or Therapeutic Use

Tel:781-999-4286 E\_mail:info@targetmol.com Address:34 Washington Street,Wellesley Hills,MA 02481