

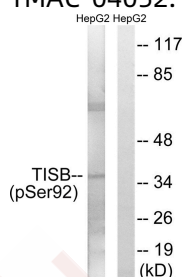
## Anti-Phospho-TIS11B (Ser92) Polyclonal Antibody

## Product Details

Ig Type:	IgG
Reactivity:	Human,Mouse
Conjugation:	Unconjugated
Molecular Weight:	Actual: 36 kDa.
Purification:	Antibodies were produced by immunizing rabbits with synthetic phosphopeptide and KLH conjugates. Antibodies were purified by affinity-chromatography using epitope-specific phosphopeptide. Non-phospho specific antibodies were removed by chromatography using non-phosphopeptide.

## Applications

Verified Activity: 1. Western blot analysis of extracts from HepG2 cells using TISB (Phospho-Ser92) Antibody TMAC-04052. The lane on the right is treated with the antigen-specific peptide.



Application: WB  
Recommended WB: 1:500-1000

## Properties

Stability & Storage: Store at -20°C or -80°C for 12 months. Avoid repeated freeze-thaw cycles.  
Shipping: Shipping with blue ice.

## Antigen Details

Immunogen: Peptide sequence around phosphorylation site of Serine 92(S-F-S(p)-E-G) derived from Human TISB  
Antigen Species: Human  
Uniprot ID: Q07352  
Synonyms: TIS11B (p-Ser92);p-TIS11B (Ser92);p-TIS11B (S92);TIS11B (p-S92)

## Research Background

Probable regulatory protein involved in regulating the response to growth factors.

**Inhibitor · Natural Compounds · Compound Libraries · Recombinant Proteins**

This product is for Research Use Only. Not for Human or Veterinary or Therapeutic Use

Tel:781-999-4286 E\_mail:info@targetmol.com Address:34 Washington Street,Wellesley Hills,MA 02481