

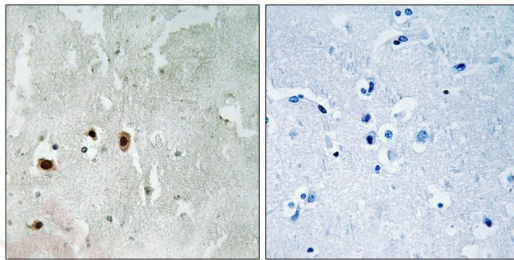
Anti-Phospho-KAT5 (Ser90) Polyclonal Antibody

Product Details

Ig Type:	IgG
Reactivity:	Human,Mouse,Rat
Conjugation:	Unconjugated
Molecular Weight:	Actual: 58 kDa.
Purification:	Antibodies were produced by immunizing rabbits with synthetic phosphopeptide and KLH conjugates. Antibodies were purified by affinity-chromatography using epitope-specific phosphopeptide. Non-phospho specific antibodies were removed by chromatography using non-phosphopeptide.

Applications

Verified Activity: 1. Immunohistochemical analysis of paraffin-embedded human brain tissue using Tip60 (Phospho-Ser90) antibody TMAC-04048 (left) or the same antibody preincubated with blocking peptide (right).



Application:	IHC
Recommended	IHC: 1:50-100

Properties

Stability & Storage:	Store at -20°C or -80°C for 12 months. Avoid repeated freeze-thaw cycles.
Shipping:	Shipping with blue ice.

Antigen Details

Immunogen:	Peptide sequence around phosphorylation site of Serine 90(P-G-S(p)-P-E) derived from Human Tip60
Antigen Species:	Human
Uniprot ID:	Q92993
Synonyms:	p-KAT5 (Ser90);KAT5 (p-Ser90);p-KAT5 (S90);KAT5 (p-S90)

Research Background

The protein encoded by this gene belongs to the MYST family of histone acetyl transferases (HATs) and was originally isolated as an HIV-1 TAT-interactive protein. HATs play important roles in regulating chromatin remodeling, transcription and other nuclear processes by acetylating histone and nonhistone proteins. This protein is a histone acetylase that has a role in DNA repair and apoptosis and is thought to play an important role in signal

transduction. Alternative splicing of this gene results in multiple transcript variants.

Inhibitor · Natural Compounds · Compound Libraries · Recombinant Proteins

This product is for Research Use Only · Not for Human or Veterinary or Therapeutic Use

Tel:781-999-4286 E_mail:info@targetmol.com Address:34 Washington Street,Wellesley Hills,MA 02481