

## Anti-THAP1 Antibody (8N883)

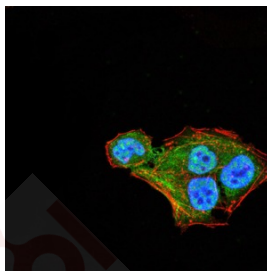
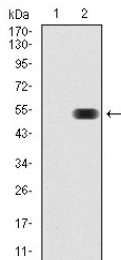
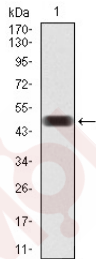
### Product Details

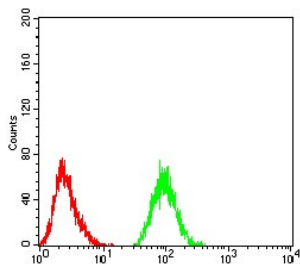
Reactivity:	Human
Conjugation:	Unconjugated
Molecular Weight:	Theoretical: 25 kDa.
Clone:	8N883
Purification:	ProA affinity purified

### Applications

#### Verified Activity:

1. Western blot analysis of THAP1 on human THAP1 recombinant protein using anti-THAP1 antibody at 1/1,000 dilution.
2. Western blot analysis of THAP1 on HEK293 (1) and THAP1-hlgGfc transfected HEK293 (2) cell lysate using anti-THAP1 antibody at 1/1,000 dilution.
3. ICC staining THAP1 (green) and Actin filaments (red) in Hela cells. The nuclear counter stain is DAPI (blue). Cells were fixed in paraformaldehyde, permeabilised with 0.25% Triton X100/PBS.
4. Flow cytometric analysis of Jurkat cells with THAP1 antibody at 1/100 dilution (green) compared with an unlabelled control (cells without incubation with primary antibody; red).





Application: FCM,ICC,WB

Recommended WB: 1:500-2000; ICC: 1:50-200; FCM: 1:50-200

### Properties

Stability & Storage: Store at -20°C or -80°C for 12 months. Avoid repeated freeze-thaw cycles.

Shipping: Shipping with blue ice.

### Antigen Details

Immunogen: Recombinant Protein

Uniprot ID: Q9NVV9

Synonyms: THAP1\_HUMAN;THAP 1;MGC33014;FLJ10477;Nuclear proapoptotic factor;THAP domain protein 1;THAP domain containing 1;THAP domain-containing protein 1;4833431A01Rik;THAP domain containing apoptosis associated protein 1;DYT6;THAP domain containing protein 1

### Research Background

THAP1 (THAP domain containing, apoptosis associated protein 1) is a 213 amino acid protein that localizes to the nucleoplasm and contains one THAP-type zinc finger, a conserved DNA-binding domain. Interacting with PAR4, THAP1 functions as a pro-apoptotic protein that acts in a zinc-dependent manner and enhances the likelihood of both TNF- and serum withdrawal-induced apoptosis, possibly playing a role in promyelocytic leukemia. The gene encoding THAP1 maps to human chromosome 8, which consists of nearly 146 million base pairs, houses more than 800 genes and is associated with a variety of diseases and malignancies. Schizophrenia, bipolar disorder, Trisomy 8, Pfeiffer syndrome, congenital hypothyroidism, Waardenburg syndrome and some leukemias and lymphomas are thought to occur as a result of defects in specific genes that map to chromosome 8.

**Inhibitor · Natural Compounds · Compound Libraries · Recombinant Proteins**

This product is for Research Use Only · Not for Human or Veterinary or Therapeutic Use

Tel:781-999-4286 E\_mail:info@targetmol.com Address:34 Washington Street,Wellesley Hills,MA 02481