

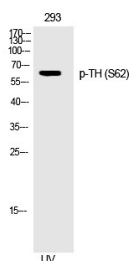
## Anti-Phospho-TH (Ser62) Polyclonal Antibody

## Product Details

Ig Type:	IgG
Reactivity:	Human,Mouse,Rat,Monkey
Conjugation:	Unconjugated
Molecular Weight:	Actual: 60 kDa.
Purification:	The antibody was affinity-purified from rabbit antiserum by affinity-chromatography using epitope-specific immunogen.

## Applications

Verified Activity: 1. Western Blot analysis of 293 cells using Phospho-TH (S62) Polyclonal Antibody.



Application:	ELISA,IHC,WB
Recommended	WB: 1:500-2000; IHC: 1:100-300; ELISA: 1:5000

## Properties

Stability & Storage:	Store at -20°C or -80°C for 12 months. Avoid repeated freeze-thaw cycles.
Shipping:	Shipping with blue ice.

## Antigen Details

Immunogen:	A synthesized phosphopeptide: human TH around the phosphorylation site of S62
Antigen Species:	Human
Uniprot ID:	P07101
Synonyms:	p-TH (Ser62);TH (p-Ser62);p-TH (S62);TH (p-S62)

**Inhibitor · Natural Compounds · Compound Libraries · Recombinant Proteins**

This product is for Research Use Only. Not for Human or Veterinary or Therapeutic Use

Tel:781-999-4286 E\_mail:info@targetmol.com Address:34 Washington Street,Wellesley Hills,MA 02481