

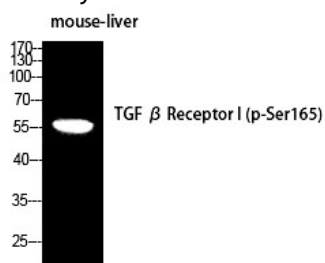
Anti-Phospho-TGF $\beta$  RI (Ser165) Polyclonal Antibody

## Product Details

|               |   |
|---------------|---|
| Ig Type:      | IgG   |
| Reactivity:   | Human,Mouse,Rat   |
| Conjugation:  | Unconjugated  |
| Purification: | The antibody was affinity-purified from rabbit antiserum by affinity-chromatography using epitope-specific immunogen. |

## Applications

Verified Activity: 1. Western Blot analysis of MOUSE-LIVER cells using Phospho-TGF $\beta$  RI (S165) Polyclonal Antibody.



|              |   |
|--------------|---|
| Application: | ELISA,IF,WB                                   |
| Recommended  | WB: 1:500-2000; IF: 1:200-1000; ELISA: 1:5000 |

## Properties

|                      |   |
|----------------------|---|
| Stability & Storage: | Store at -20°C or -80°C for 12 months. Avoid repeated freeze-thaw cycles. |
| Shipping:            | Shipping with blue ice.   |

## Antigen Details

|                  |   |
|------------------|---|
| Immunogen:       | A synthesized phosphopeptide: human TGF $\beta$ RI around the phosphorylation site of S165          |
| Antigen Species: | Human   |
| Uniprot ID:      | P36897  |
| Synonyms:        | p-TGF $\beta$ RI (Ser165);TGF $\beta$ RI (p-S165);p-TGF $\beta$ RI (S165);TGF $\beta$ RI (p-Ser165) |

**Inhibitor · Natural Compounds · Compound Libraries · Recombinant Proteins**

This product is for Research Use Only. Not for Human or Veterinary or Therapeutic Use

Tel:781-999-4286 E\_mail:info@targetmol.com Address:34 Washington Street,Wellesley Hills,MA 02481