

Anti-TERT Antibody (5R422)

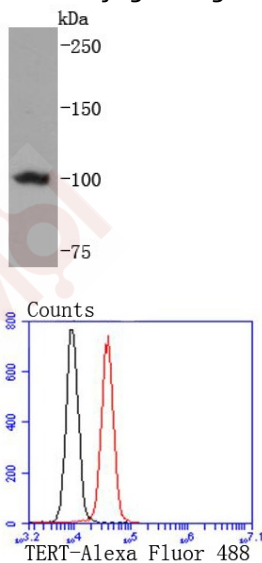
Product Details

Ig Type:	IgG
Reactivity:	Human
Conjugation:	Unconjugated
Molecular Weight:	Theoretical: 127/120/90/89 kDa.
Clone:	5R422
Purification:	ProA affinity purified

Applications

1. Western blot analysis of TERT on Hela cells lysates using anti-TERT antibody at 1/1,000 dilution.
2. Flow cytometric analysis of Hela cells with TERT antibody at 1/50 dilution (red) compared with an unlabelled control (cells without incubation with primary antibody; black). Alexa Fluor 488-conjugated goat anti rabbit IgG was used as the secondary antibody.

Verified Activity:



Application:	FCM,WB
Recommended	WB: 1:1000-2000; FCM: 1:50-100

Properties

- Stability & Storage: Store at -20°C or -80°C for 12 months. Avoid repeated freeze-thaw cycles.
- Shipping: Shipping with blue ice.

Antigen Details

Immunogen: Recombinant Protein

Uniprot ID: O14746

Research Background

Telomerase is an RNA-dependent DNA polymerase that catalyzes the addition of telomeric repeat sequences to chromosome ends. In most human somatic cells, telomerase activity is undetectable, and telomeres shorten with successive cell divisions. However, telomerase activity is detectable in immortal cells and in many human tumors. Two candidate mammalian telomerase proteins have been cloned. Human TP1 (for telomerase-associated protein 1), also designated TLP1 in rat (for telomerase protein component 1), is homologous to the Tetrahymena p80 telomerase protein and has been shown to interact with mammalian telomerase RNA. Human TERT (for telomerase reverse transcriptase), also designated hEST2 (for ever shorter telomeres), is homologous to the p123 telomerase protein from Euplotes and to the yeast Est2 protein. Expression of TERT mRNA has been shown to correlate with telomerase activity in various cell lines.

Inhibitor · Natural Compounds · Compound Libraries · Recombinant Proteins

This product is for Research Use Only · Not for Human or Veterinary or Therapeutic Use

Tel:781-999-4286 E_mail:info@targetmol.com Address:34 Washington Street,Wellesley Hills,MA 02481