

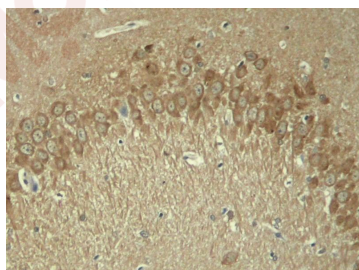
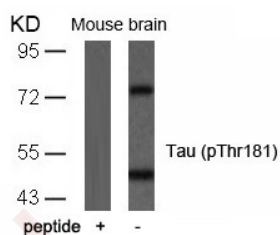
Anti-Phospho-MAPT (Thr181) Polyclonal Antibody

Product Details

Ig Type:	IgG
Reactivity:	Human,Mouse,Rat
Conjugation:	Unconjugated
Purification:	Antibodies were produced by immunizing rabbits with synthetic phosphopeptide and KLH conjugates. Antibodies were purified by affinity-chromatography using epitope-specific phosphopeptide. Non-phospho specific antibodies were removed by chromatography using non-phosphopeptide.

Applications

Verified Activity:	<ol style="list-style-type: none">Western blot analysis of extracts from mouse brain tissue using Tau (Phospho-Thr181) Antibody TMAC-03984 and the same antibody preincubated with blocking peptide.Immunohistochemical analysis of paraffin-embedded rat hippocampal region tissue from a model with Alzheimer
--------------------	--



Application:	IHC,WB
--------------	--------

Properties

Stability & Storage:	Store at 2°C-8°C for 1 month. Store at -20°C or -80°C for 12 months. Avoid repeated freeze-thaw cycles.
Shipping:	Shipping with blue ice.

Antigen Details

Immunogen:	Peptide sequence around phosphorylation site of threonine 181 (P-K-T(p)-P-P) derived from Human Tau
Antigen Species:	human
Uniprot ID:	P10636
Synonyms:	p-MAPT (Thr181);p-MAPT (T181);MAPT (p-T181);MAPT (p-Thr181)

Research Background

Promotes microtubule assembly and stability, and might be involved in the establishment and maintenance of neuronal polarity. The C-terminus binds axonal microtubules while the N-terminus binds neural plasma membrane components, suggesting that tau functions as a linker protein between both. Axonal polarity is predetermined by tau localization (in the neuronal cell) in the domain of the cell body defined by the centrosome. The short isoforms allow plasticity of the cytoskeleton whereas the longer isoforms may preferentially play a role in its stabilization.

Inhibitor · Natural Compounds · Compound Libraries · Recombinant Proteins

This product is for Research Use Only · Not for Human or Veterinary or Therapeutic Use

Tel:781-999-4286 E_mail:info@targetmol.com Address:34 Washington Street,Wellesley Hills,MA 02481