

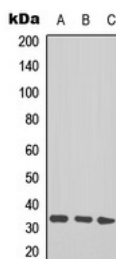
Anti-Acetyl-TAL-1/2 (Lys221, 222/Lys36, 37) Polyclonal Antibody

Product Details

Ig Type:	IgG
Reactivity:	Human,Mouse
Conjugation:	Unconjugated
Molecular Weight:	Theoretical: 34 kDa.
Purification:	The antibody was purified by immunogen affinity chromatography.

Applications

Verified Activity: 1. Western blot analysis of GPR103 expression in U87MG, HEK293T whole cell lysates.



Application:	WB
Recommended	WB: 1:500-1000

Properties

Stability & Storage:	Store at -20°C or -80°C for 12 months. Avoid repeated freeze-thaw cycles.
Shipping:	Shipping with blue ice.

Antigen Details

Immunogen:	KLH conjugated synthetic peptide: encompassing a sequence within the center region of human TAL1/2
Antigen Species:	Human
Uniprot ID:	P17542
Synonyms:	Ac-TAL-1/2 (Lys221, 222/Lys36, 37);TAL-1/2K221, 222/K36, 37ac;TAL-1/2K221, 222/Lys36, 37-acetylated;Ac-TAL-1/2 (K221, 222/K36, 37);Acetyl-TAL-1/2 (K221, 222/K36, 37);Ac-TAL-1/2K221, 222/K36, 37

Inhibitor · Natural Compounds · Compound Libraries · Recombinant Proteins

This product is for Research Use Only. Not for Human or Veterinary or Therapeutic Use

Tel:781-999-4286 E_mail:info@targetmol.com Address:34 Washington Street,Wellesley Hills,MA 02481