

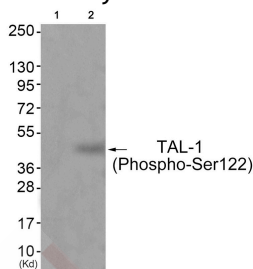
Anti-Phospho-TAL-1 (Ser122) Polyclonal Antibody

Product Details

Ig Type:	IgG
Reactivity:	Human,Mouse
Conjugation:	Unconjugated
Molecular Weight:	Actual: 45 kDa.
Purification:	Antibodies were produced by immunizing rabbits with synthetic phosphopeptide and KLH conjugates. Antibodies were purified by affinity-chromatography using epitope-specific phosphopeptide. Non-phospho specific antibodies were removed by chromatography using non-phosphopeptide.

Applications

Verified Activity: 1. Western blot analysis of extracts from JK cells (Lane 2), using TAL-1 (Phospho-Ser122) Antibody TMAC-03960. The lane on the left is treated with antigen-specific peptide.



Application:	WB
Recommended	WB: 1:500-1000

Properties

Stability & Storage:	Store at -20°C or -80°C for 12 months. Avoid repeated freeze-thaw cycles.
Shipping:	Shipping with blue ice.

Antigen Details

Immunogen:	Peptide sequence around phosphorylation site of Serine 122(Q-L-S(p)-P-P) derived from Human TAL-1
Antigen Species:	Human
Uniprot ID:	P17542
Synonyms:	TAL-1 (p-S122);p-TAL-1 (S122);TAL-1 (p-Ser122);p-TAL-1 (Ser122)

Research Background

TAL-1 is a basic helix-loop-helix transcription. Regulates differentiation and survival during hemopoiesis. Implicated in the genesis of hemopoietic malignancies. It may play an important role in hemopoietic differentiation. Serves as a positive regulator of erythroid differentiation. Mutations are associated with T-cell leukemia and melanoma. Binds to the LIM domain containing protein Rhombotin-2.

Inhibitor · Natural Compounds · Compound Libraries · Recombinant Proteins

This product is for Research Use Only · Not for Human or Veterinary or Therapeutic Use

Tel:781-999-4286 E_mail:info@targetmol.com Address:34 Washington Street,Wellesley Hills,MA 02481