

## Anti-Syntrophin alpha 1 Antibody (6T145)

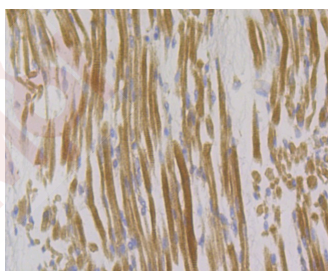
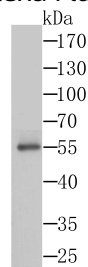
### Product Details

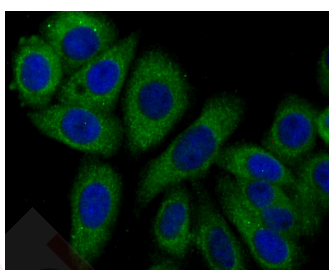
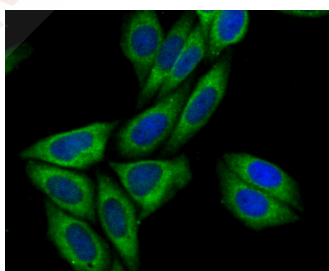
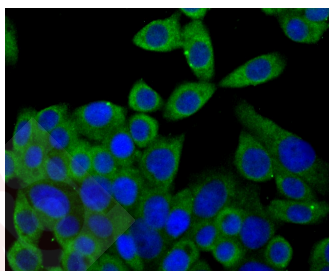
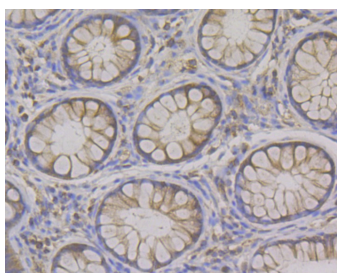
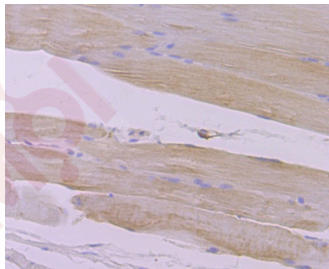
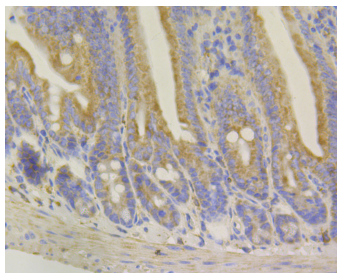
Ig Type:	IgG
Reactivity:	Human,Mouse
Conjugation:	Unconjugated
Molecular Weight:	Theoretical: 54 kDa.
Clone:	6T145
Purification:	ProA affinity purified

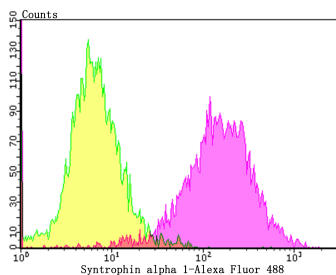
### Applications

#### Verified Activity:

1. Western blot analysis of Syntrophin alpha 1 on SiHa cells lysates using anti-Syntrophin alpha 1 antibody at 1/1,000 dilution.
2. Immunohistochemical analysis of paraffin-embedded human skeletal muscle tissue using anti-Syntrophin alpha 1 antibody. Counter stained with hematoxylin.
3. Immunohistochemical analysis of paraffin-embedded mouse colon tissue using anti-Syntrophin alpha 1 antibody. Counter stained with hematoxylin.
4. Immunohistochemical analysis of paraffin-embedded mouse skeletal muscle tissue using anti-Syntrophin alpha 1 antibody. Counter stained with hematoxylin.
5. Immunohistochemical analysis of paraffin-embedded human colon tissue using anti-Syntrophin alpha 1 antibody. Counter stained with hematoxylin.
6. ICC staining Syntrophin alpha 1 in LOVO cells (green). The nuclear counter stain is DAPI (blue). Cells were fixed in paraformaldehyde, permeabilised with 0.25% Triton X100/PBS.
7. ICC staining Syntrophin alpha 1 in SiHa cells (green). The nuclear counter stain is DAPI (blue). Cells were fixed in paraformaldehyde, permeabilised with 0.25% Triton X100/PBS.
8. ICC staining Syntrophin alpha 1 in HepG2 cells (green). The nuclear counter stain is DAPI (blue). Cells were fixed in paraformaldehyde, permeabilised with 0.25% Triton X100/PBS.
9. Flow cytometric analysis of LOVO cells with Syntrophin alpha 1 antibody at 1/100 dilution (purple) compared with an unlabelled control (cells without incubation with primary antibody; yellow). Alexa Fluor 488-conjugated goat anti-rabbit IgG was used as the secondary antibody.







Application: FCM,ICC,IF,IHC,WB

Recommended WB: 1:500; IHC: 1:50-200; ICC: 1:50-200; FCM: 1:50-200

### Properties

Stability & Storage: Store at -20°C or -80°C for 12 months. Avoid repeated freeze-thaw cycles.

Shipping: Shipping with blue ice.

### Antigen Details

Immunogen: Recombinant Protein: human Syntrophin alpha 1 aa 1-200

Antigen Species: human

Uniprot ID: Q13424

Synonyms: Pro-TGF- $\alpha$  cytoplasmic domain-interacting protein 1;Syntrophina1;dj1187j4.5; Syntrophina $\alpha$ 1;Syntrophin-1;SNT1;Alpha-1-syntrophin;Acidic alpha 1 syntrophin;TACIP1; Syntrophinalpha1;Syntrophin a 1;Dystrophin associated protein A1 59kDa acidic component; OTTHUMP00000030650;SNTA1\_HUMAN;Syntrophin  $\alpha$  1;59 kDa dystrophin-associated protein A1 acidic component 1;LQT12;Syntrophin 1;Snta1;Alpha 1 syntrophin

### Research Background

The syntrophins are PDZ-domain-containing proteins that facilitate the recruitment of signaling proteins such as NOS1 to the dystrophin-associated protein complex. The syntrophin family are structurally related proteins that contain multiple protein interaction motifs. Syntrophins associate directly with dystrophin, the product of the Duchenne muscular dystrophy locus, and its homologs.  $\alpha$ -Syntrophin has an important role in synapse formation and in the organization of utrophin, acetylcholine receptor and acetylcholinesterase at the neuromuscular synapse. Specifically, NOS1 binds to  $\alpha$ -Syntrophin at muscle sarcolemma.  $\beta$ 2-Syntrophin is a modular adapter. In muscle cells,  $\beta$ 2-Syntrophin interacts with members of the dystrophin family, which includes utrophin.

**Inhibitor · Natural Compounds · Compound Libraries · Recombinant Proteins**

This product is for Research Use Only · Not for Human or Veterinary or Therapeutic Use

Tel:781-999-4286 E\_mail:info@targetmol.com Address:34 Washington Street,Wellesley Hills,MA 02481