

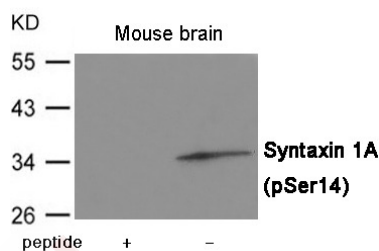
## Anti-Phospho-Syntaxin 1A (Ser14) Polyclonal Antibody

## Product Details

|                   |  |
|-------------------|--|
| Ig Type:          | IgG  |
| Reactivity:       | Human,Mouse,Rat  |
| Conjugation:      | Unconjugated   |
| Molecular Weight: | Actual: 35 kDa.  |
| Purification:     | Antibodies were produced by immunizing rabbits with synthetic phosphopeptide and KLH conjugates. Antibodies were purified by affinity-chromatography using epitope-specific phosphopeptide. Non-phospho specific antibodies were removed by chromatography using non-phosphopeptide. |

## Applications

Verified Activity: 1. Western blot analysis of extracts from Mouse brain tissue using Syntaxin 1A (Phospho-Ser14) Antibody TMAC-03943. The lane on the left is treated with the antigen-specific peptide.



Application: WB

## Properties

Stability & Storage: Store at -20°C or -80°C for 12 months. Avoid repeated freeze-thaw cycles.

Shipping: Shipping with blue ice.

## Antigen Details

|                  |   |
|------------------|---|
| Immunogen:       | Peptide sequence around phosphorylation site of Serine 14 (K-D-S(p)-D-D) derived from Human Syntaxin 1A |
| Antigen Species: | Human   |
| Uniprot ID:      | Q16623  |
| Synonyms:        | p-Syntaxin 1A (S14);Syntaxin 1A (p-Ser14);Syntaxin 1A (p-S14);p-Syntaxin 1A (Ser14)                     |

## Research Background

Potentially involved in docking of synaptic vesicles at presynaptic active zones. May play a critical role in neurotransmitter exocytosis. May mediate Ca<sup>2+</sup>-regulation of exocytosis acrosomal reaction in sperm.

**Inhibitor · Natural Compounds · Compound Libraries · Recombinant Proteins**

This product is for Research Use Only · Not for Human or Veterinary or Therapeutic Use

Tel:781-999-4286 E\_mail:info@targetmol.com Address:34 Washington Street,Wellesley Hills,MA 02481