

Anti-SDC1 Antibody (3T311)

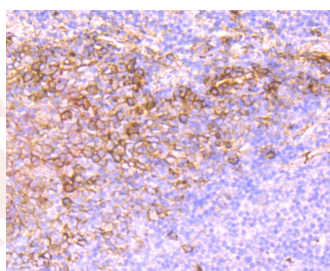
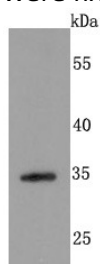
Product Details

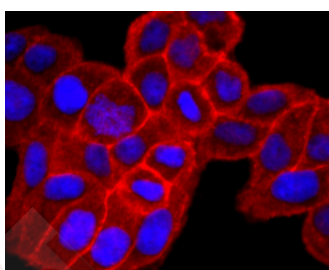
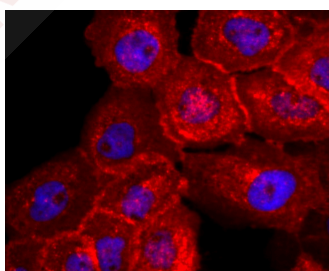
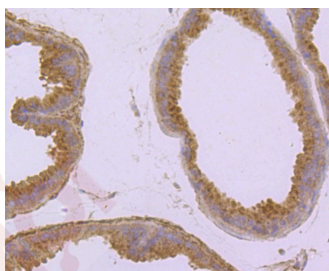
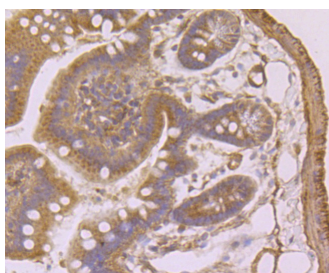
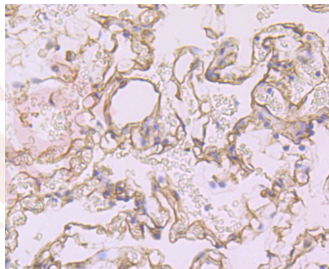
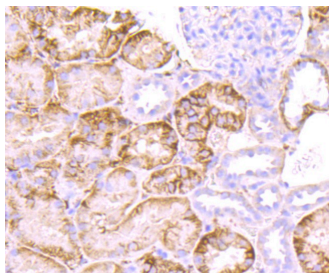
Ig Type:	IgG
Reactivity:	Human,Mouse,Rat
Conjugation:	Unconjugated
Molecular Weight:	Theoretical: 35 kDa.
Clone:	3T311
Purification:	ProA affinity purified

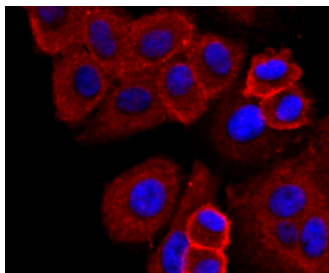
Applications

Verified Activity:

1. Western blot analysis of Syndecan 1 on NIH-3T3 cells lysates using anti-Syndecan 1 antibody at 1/500 dilution.
2. Immunohistochemical analysis of paraffin-embedded human tonsil tissue using anti-Syndecan 1 antibody. Counter stained with hematoxylin.
3. Immunohistochemical analysis of paraffin-embedded human kidney tissue using anti-Syndecan 1 antibody. Counter stained with hematoxylin.
4. Immunohistochemical analysis of paraffin-embedded human lung tissue using anti-Syndecan 1 antibody. Counter stained with hematoxylin.
5. Immunohistochemical analysis of paraffin-embedded mouse colon tissue using anti-Syndecan 1 antibody. Counter stained with hematoxylin.
6. Immunohistochemical analysis of paraffin-embedded mouse prostate tissue using anti-Syndecan 1 antibody. Counter stained with hematoxylin.
7. ICC staining Syndecan 1 in A431 cells (red). The nuclear counter stain is DAPI (blue). Cells were fixed in paraformaldehyde, permeabilised with 0.25% Triton X100/PBS.
8. ICC staining Syndecan 1 in Hela cells (red). The nuclear counter stain is DAPI (blue). Cells were fixed in paraformaldehyde, permeabilised with 0.25% Triton X100/PBS.
9. ICC staining Syndecan 1 in HepG2 cells (red). The nuclear counter stain is DAPI (blue). Cells were fixed in paraformaldehyde, permeabilised with 0.25% Triton X100/PBS.







Application: ICC/IF,IHC,WB

Recommended WB: 1:500-1000; IHC: 1:50-200; ICC/IF: 1:100-500

Properties

Stability & Storage: Store at -20°C or -80°C for 12 months. Avoid repeated freeze-thaw cycles.

Shipping: Shipping with blue ice.

Antigen Details

Immunogen: Recombinant Protein

Uniprot ID: P18827

Synonyms: Syndecan-1

Research Background

Syndecan-1 (SYND1), also designated CD138, is a type I integral membrane proteoglycan that contains both chondroitin sulfate and heparan sulfate groups. It is expressed in mouse on pre-B cells, immature B cells and plasma cells. Syndecan-1 is also found on the basolateral surfaces of epithelial cells, endothelial cells of sprouting capillaries and embryonic condensing mesenchymal cells. Syndecan-1 functions as an extracellular matrix receptor which binds to collagens, Fibronectin and Thrombospondin. It has been shown to co-localize with Actin-rich filaments and may act to link the cytoskeleton to the extracellular matrix.

Inhibitor · Natural Compounds · Compound Libraries · Recombinant Proteins

This product is for Research Use Only. Not for Human or Veterinary or Therapeutic Use

Tel:781-999-4286 E_mail:info@targetmol.com Address:34 Washington Street,Wellesley Hills,MA 02481
