

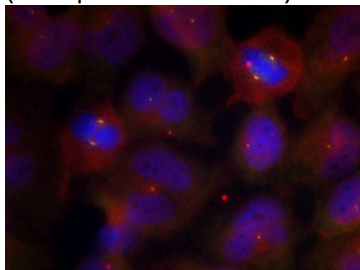
Anti-Phospho-Synaptotagmin-1/2 (Thr202, 199) Polyclonal Antibody

Product Details

Ig Type:	IgG
Reactivity:	Human,Mouse,Rat
Conjugation:	Unconjugated
Purification:	Antibodies were produced by immunizing rabbits with synthetic phosphopeptide and KLH conjugates. Antibodies were purified by affinity-chromatography using epitope-specific phosphopeptide. Non-phospho specific antibodies were removed by chromatography using non-phosphopeptide.

Applications

Verified Activity: 1. Immunofluorescence staining of methanol-fixed Hela cells using Synaptotagmin 1/2 (Phospho-Thr202/199) Antibody TMAC-03940.



Application: IF

Properties

Stability & Storage: Store at 2°C-8°C for 1 month. Store at -20°C or -80°C for 12 months. Avoid repeated freeze-thaw cycles.

Shipping: Shipping with blue ice.

Antigen Details

Immunogen: Peptide sequence around phosphorylation site of threonine 202/199 (R-K-T(p)-L-N) derived from Human Synaptotagmin 1/2

Antigen Species: Human

Uniprot ID: P21579

Synonyms: p-Synaptotagmin-1/2 (Thr202, 199);Synaptotagmin-1/2 (p-T202, 199);p-Synaptotagmin-1/2 (T202, 199);Synaptotagmin-1/2 (p-Thr202, 199)

Research Background

The synaptotagmins are integral membrane proteins of synaptic vesicles thought to serve as Ca²⁺ sensors in the process of vesicular trafficking and exocytosis. Calcium binding to synaptotagmin I participates in triggering neurotransmitter release at the synapse

Inhibitor · Natural Compounds · Compound Libraries · Recombinant Proteins

This product is for Research Use Only. Not for Human or Veterinary or Therapeutic Use

Tel:781-999-4286 E_mail:info@targetmol.com Address:34 Washington Street,Wellesley Hills,MA 02481