

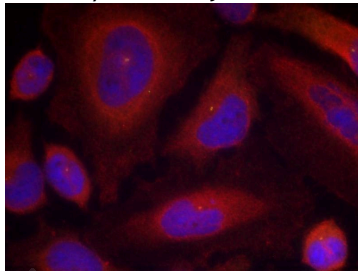
Anti-Phospho-Synaptotagmin-1 (Ser309) Polyclonal Antibody

Product Details

Ig Type:	IgG
Reactivity:	Human,Mouse,Rat
Conjugation:	Unconjugated
Purification:	Antibodies were produced by immunizing rabbits with synthetic phosphopeptide and KLH conjugates. Antibodies were purified by affinity-chromatography using epitope-specific phosphopeptide. Non-phospho specific antibodies were removed by chromatography using non-phosphopeptide.

Applications

Verified Activity: 1. Immunofluorescence staining of methanol-fixed Hela cells using Synaptotagmin 1 (Phospho-Ser309) Antibody TMAC-03938.



Application: IF

Properties

Stability & Storage: Store at 2°C-8°C for 1 month. Store at -20°C or -80°C for 12 months. Avoid repeated freeze-thaw cycles.

Shipping: Shipping with blue ice.

Antigen Details

Immunogen: Peptide sequence around phosphorylation site of serine 309 (G-L-S(p)-D-P) derived from Human Synaptotagmin 1

Antigen Species: Human

Uniprot ID: P21579

Synonyms: Synaptotagmin-1 (p-Ser309);p-Synaptotagmin-1 (S309);p-Synaptotagmin-1 (Ser309); Synaptotagmin-1 (p-S309)

Research Background

The synaptotagmins are integral membrane proteins of synaptic vesicles thought to serve as Ca²⁺ sensors in the process of vesicular trafficking and exocytosis. Calcium binding to synaptotagmin I participates in triggering neurotransmitter release at the synapse

Inhibitor · Natural Compounds · Compound Libraries · Recombinant Proteins

This product is for Research Use Only. Not for Human or Veterinary or Therapeutic Use

Tel:781-999-4286 E_mail:info@targetmol.com Address:34 Washington Street,Wellesley Hills,MA 02481