

Anti-Synaptophysin/SYP Antibody (1U942)

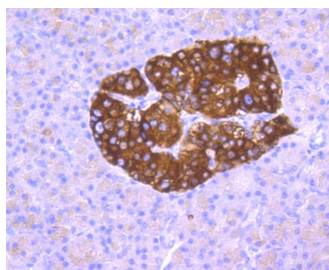
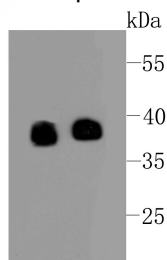
Product Details

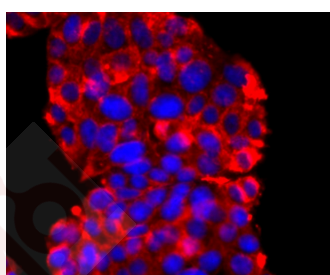
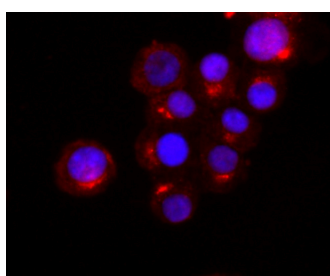
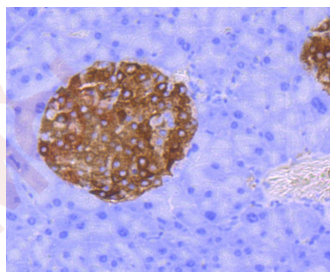
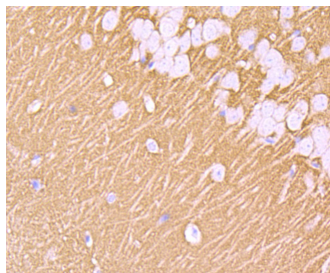
Ig Type:	IgG
Reactivity:	Human,Mouse,Rat
Conjugation:	Unconjugated
Molecular Weight:	Theoretical: 38 kDa.
Clone:	1U942
Purification:	ProA affinity purified

Applications

Verified Activity:

1. Western blot analysis of Synaptophysin on different lysates using anti-Synaptophysin at 1/500 dilution. Positive control: Lane 1: Human brain, Lane 2: PC-12.
2. Immunohistochemical analysis of paraffin-embedded human pancreas tissue using anti-Synaptophysin antibody. Counter stained with hematoxylin.
3. Immunohistochemical analysis of paraffin-embedded mouse brain tissue using anti-Synaptophysin antibody. Counter stained with hematoxylin.
4. Immunohistochemical analysis of paraffin-embedded mouse pancreas tissue using anti-Synaptophysin antibody. Counter stained with hematoxylin.
5. ICC staining Synaptophysin in N2A cells (red). The nuclear counter stain is DAPI (blue). Cells were fixed in paraformaldehyde, permeabilised with 0.25% Triton X100/PBS.
6. ICC staining Synaptophysin in PC-12 cells (red). The nuclear counter stain is DAPI (blue). Cells were fixed in paraformaldehyde, permeabilised with 0.25% Triton X100/PBS.





Application: ICC/IF,IHC,WB

Recommended WB: 1:1000-5000; IHC: 1:50-200; ICC/IF: 1:50-200

Properties

Stability & Storage: Store at -20°C or -80°C for 12 months. Avoid repeated freeze-thaw cycles.

Shipping: Shipping with blue ice.

Antigen Details

Immunogen: Recombinant Protein

Uniprot ID: P08247

Research Background

Synaptic vesicles participate in a cycle of fusion with the plasma membrane and reformation by endocytosis. Synaptic vesicle protein synaptophysin (SYP) is targeted to early endosomes in transfected fibroblasts and in neuroendocrine cells. SYP is an N-glycosylated intergral membrane protein found in neurons and endocrine cells that associates into hexamers to form a large conductance channel. SYP contains four transmembrane domains and may function as a gap junction-like channel. Membrane cholesterol specifically interacts with SYP to play a role in vesicle formation. Synaptobrevin (VAMP) also binds to SYP and the resultant complex is upregulated during

A DRUG SCREENING EXPERT

neuronal development, but is absent in exocytosis fusion complex. Thus, the synaptophysin-synaptobrevin complex is not essential for exocytosis, but rather provides a pool of synaptobrevin for exocytosis. In addition, the tail domain of brain Myosin V also forms a stable complex with synaptobrevin II and SYP, and this complex is disassembled upon the depolarization-induced entry of Ca²⁺ into intact nerve endings.

Inhibitor · Natural Compounds · Compound Libraries · Recombinant Proteins

This product is for Research Use Only · Not for Human or Veterinary or Therapeutic Use

Tel:781-999-4286 E_mail:info@targetmol.com Address:34 Washington Street,Wellesley Hills,MA 02481