

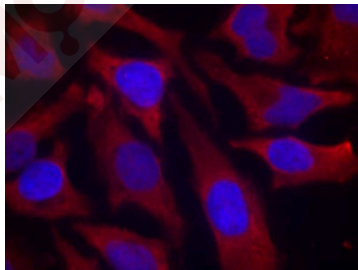
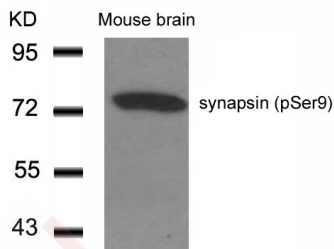
Anti-Phospho-Synapsin-1 (Ser9) Polyclonal Antibody

Product Details

Ig Type:	IgG
Reactivity:	Human,Mouse,Rat
Conjugation:	Unconjugated
Purification:	Antibodies were produced by immunizing rabbits with synthetic phosphopeptide and KLH conjugates. Antibodies were purified by affinity-chromatography using epitope-specific phosphopeptide. Non-phospho specific antibodies were removed by chromatography using non-phosphopeptide.

Applications

- Verified Activity:
- Western blot analysis of extracts from Mouse Brain tissue using synapsin (Phospho-Ser9) Antibody TMAC-03934.
 - Immunofluorescence staining of methanol-fixed Hela cells using synapsin (Phospho-Ser9) Antibody TMAC-03934.



Application: IF,WB

Properties

Stability & Storage:	Store at 2°C-8°C for 1 month. Store at -20°C or -80°C for 12 months. Avoid repeated freeze-thaw cycles.
Shipping:	Shipping with blue ice.

Antigen Details

Immunogen: Peptide sequence around phosphorylation site of serine 9 (R-L-S(p)-D-S) derived from Human SYN1/synapsin
Antigen Species: Human
Uniprot ID: P17600
Synonyms: Synapsin-1 (p-S9);p-Synapsin-1 (S9);p-Synapsin-1 (Ser9);Synapsin-1 (p-Ser9)

Research Background

Neuronal phosphoprotein that coats synaptic vesicles, binds to the cytoskeleton, and is believed to function in the regulation of neurotransmitter release. The complex formed with NOS1 and CAPON proteins is necessary for specific nitric-oxid functions at a presynaptic level

Inhibitor · Natural Compounds · Compound Libraries · Recombinant Proteins

This product is for Research Use Only · Not for Human or Veterinary or Therapeutic Use

Tel:781-999-4286 E_mail:info@targetmol.com Address:34 Washington Street,Wellesley Hills,MA 02481