

## Anti-Phospho-Syk (Tyr323) Polyclonal Antibody

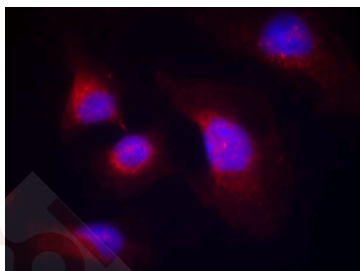
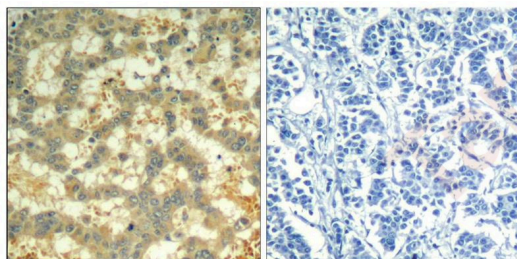
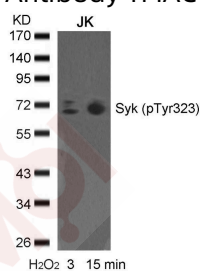
### Product Details

Ig Type:	IgG
Reactivity:	Human,Mouse,Rat
Conjugation:	Unconjugated
Purification:	Antibodies were produced by immunizing rabbits with synthetic phosphopeptide and KLH conjugates. Antibodies were purified by affinity-chromatography using epitope-specific phosphopeptide. Non-phospho specific antibodies were removed by chromatography using non-phosphopeptide.

### Applications

#### Verified Activity:

1. Western blot analysis of extracts from JK cells untreated or treated with H<sub>2</sub>O<sub>2</sub> for the indicated times, using syk (phospho-Tyr323) Antibody TMAC-03929.
2. Immunohistochemical analysis of paraffin-embedded human breast carcinoma tissue using syk (Phospho-Tyr323) Antibody TMAC-03929 (left) or the same antibody preincubated with blocking peptide (right).
3. Immunofluorescence staining of methanol-fixed Hela cells using syk (phospho-Tyr323) Antibody TMAC-03929.



Application: IF,IHC,WB

### Properties

**Stability & Storage:** Store at 2°C-8°C for 1 month. Store at -20°C or -80°C for 12 months. Avoid repeated freeze-thaw cycles.

**Shipping:** Shipping with blue ice.

---

### Antigen Details

**Immunogen:** Peptide sequence around phosphorylation site of tyrosine 323 (N-P-Y(p)-E- P) derived from Human syk

**Antigen Species:** Human

**Uniprot ID:** P43405

**Synonyms:** Tyrosine-protein kinase SYK;KSYK;40 kDa tyrosine-protein kinase SYK;Spleen tyrosine kinase; Syk;p72syk;Tyrosine-protein kinase SYK(Spleen tyrosine kinase) [Contains: 72kDa tyrosine-protein kinase SYK;p-Syk (Y323);Syk (p-Tyr323);p-Syk (Tyr323);Syk (p-Y323);Tyrosine protein kinase SYK

---

### Research Background

Positive effector of BCR-stimulated responses. Couples the B-cell antigen receptor (BCR) to the mobilization of calcium ion either through a phosphoinositide 3-kinase-dependent pathway, when not phosphorylated on tyrosines of the linker region, or through a phospholipase C-gamma-dependent pathway, when phosphorylated on Tyr-348 and Tyr-352. Thus the differential phosphorylation of Syk can determine the pathway by which BCR is coupled to the regulation of intracellular calcium ion

**Inhibitor · Natural Compounds · Compound Libraries · Recombinant Proteins**

This product is for Research Use Only · Not for Human or Veterinary or Therapeutic Use

Tel:781-999-4286 E\_mail:info@targetmol.com Address:34 Washington Street,Wellesley Hills,MA 02481