

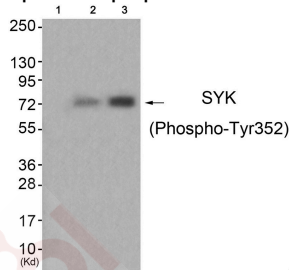
Anti-Phospho-Syk (Tyr352) Polyclonal Antibody

Product Details

Ig Type:	IgG
Reactivity:	Human,Mouse,Rat
Conjugation:	Unconjugated
Molecular Weight:	Actual: 72 kDa.
Purification:	Antibodies were produced by immunizing rabbits with synthetic phosphopeptide and KLH conjugates. Antibodies were purified by affinity-chromatography using epitope-specific phosphopeptide. Non-phospho specific antibodies were removed by chromatography using non-phosphopeptide.

Applications

Verified Activity: 1. Western blot analysis of extracts from HuvEc cells (Lane 2) and HepG2 cells (Lane 3), using SYK (Phospho-Tyr352) Antibody TMAC-03927. The lane on the left is treated with antigen-specific peptide.



Application:	ELISA,WB
Recommended	WB: 1:500-1000

Properties

Stability & Storage:	Store at -20°C or -80°C for 12 months. Avoid repeated freeze-thaw cycles.
Shipping:	Shipping with blue ice.

Antigen Details

Immunogen:	Peptide sequence around phosphorylation site of tyrosine 352(S-P-Y(p)-A-D) derived from Human SYK
Antigen Species:	Human
Uniprot ID:	P43405
Synonyms:	KSYK;Tyrosine protein kinase SYK;p-Syk (Tyr352);Syk;Tyrosine-protein kinase SYK;Tyrosine-protein kinase SYK(Spleen tyrosine kinase) [Contains: 72kDa tyrosine-protein kinase SYK;p-Syk (Y352);Syk (p-Y352);Spleen tyrosine kinase;40 kDa tyrosine-protein kinase SYK;Syk (p-Tyr352); p72syk

Research Background

Positive effector of BCR-stimulated responses. Couples the B-cell antigen receptor (BCR) to the mobilization of calcium ion either through a phosphoinositide 3-kinase-dependent pathway, when not phosphorylated on tyrosines

A DRUG SCREENING EXPERT

of the linker region, or through a phospholipase C-gamma-dependent pathway, when phosphorylated on Tyr-348 and Tyr-352. Thus the differential phosphorylation of Syk can determine the pathway by which BCR is coupled to the regulation of intracellular calcium ion

Inhibitor · Natural Compounds · Compound Libraries · Recombinant Proteins

This product is for Research Use Only · Not for Human or Veterinary or Therapeutic Use

Tel:781-999-4286 E_mail:info@targetmol.com Address:34 Washington Street,Wellesley Hills,MA 02481