

Anti-SUZ12 Antibody (5A460)

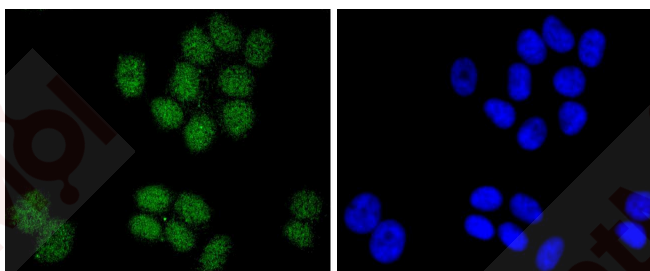
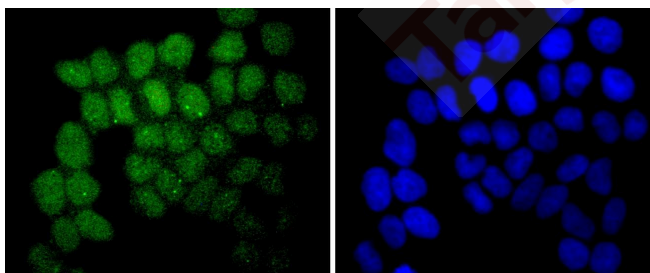
Product Details

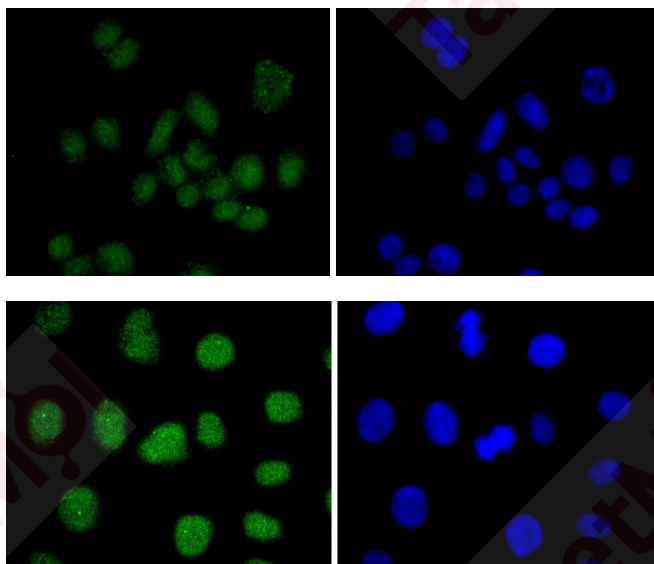
Ig Type:	IgG
Reactivity:	Human,Mouse,Rat
Conjugation:	Unconjugated
Molecular Weight:	Theoretical: 83 kDa.
Clone:	5A460
Purification:	ProA affinity purified

Applications

Verified Activity:

1. Western blot analysis of SUZ12 on MCF-7 cells lysates using anti-SUZ12 antibody at 1/1,000 dilution.
2. ICC staining SUZ12 in Hela cells (green). The nuclear counter stain is DAPI (blue). Cells were fixed in paraformaldehyde, permeabilised with 0.25% Triton X100/PBS.
3. ICC staining SUZ12 in MCF-7 cells (green). The nuclear counter stain is DAPI (blue). Cells were fixed in paraformaldehyde, permeabilised with 0.25% Triton X100/PBS.
4. ICC staining SUZ12 in SW480 cells (green). The nuclear counter stain is DAPI (blue). Cells were fixed in paraformaldehyde, permeabilised with 0.25% Triton X100/PBS.
5. ICC staining SUZ12 in SKOV-3 cells (green). The nuclear counter stain is DAPI (blue). Cells were fixed in paraformaldehyde, permeabilised with 0.25% Triton X100/PBS.





Application: ICC/IF,IP,WB
Recommended WB: 1:1000-2000; ICC/IF: 1:50-200

Properties

Stability & Storage: Store at -20°C or -80°C for 12 months. Avoid repeated freeze-thaw cycles.
Shipping: Shipping with blue ice.

Antigen Details

Immunogen: Recombinant Protein
Uniprot ID: Q15022
Synonyms: Polycomb protein SUZ12;CHET9;Joined to JAZF1 protein;JJAZ1;KIAA0160;Chromatin precipitated E2F target 9 protein;Suppressor of zeste 12 protein homolog;ChET 9 protein

Research Background

The Polycomb group (PcG) genes contribute to the maintenance of cell identity, cell cycle regulation and oncogenesis. The mammalian PcG proteins are regulatory proteins important for Hox gene expression, axial skeleton development and the control of proliferation and survival of hematopoietic cells. By inducing changes in chromatin structure, the PcG proteins are part of a cellular memory system that is responsible for gene activity being inherited to progeny cells. PcG proteins silence gene expression through the formation of multimeric protein complexes with different compositions. Manipulating the expression-levels of various PcG proteins in mammalian cell lines results in cellular transformation, which may be a link between the chromatin-associated PcG proteins and cancer. Polycomb protein SUZ12, also designated ChET 9 protein or joined-to-JAZF1 protein, is a nuclear protein belonging to the VEFs (VRN2-EMF2-FIS2-SUZ12) family. SUZ12 has been detected at the breakpoints of a certain recurrent chromosomal translocation which has been reported in endometrial stromal sarcoma. It is a component of the PRC2 complex, composed of EED, EZH2, SUZ12/JJAZ1, RBBP4 and RBBP7.

Inhibitor · Natural Compounds · Compound Libraries · Recombinant Proteins

This product is for Research Use Only · Not for Human or Veterinary or Therapeutic Use

Tel:781-999-4286 E_mail:info@targetmol.com Address:34 Washington Street,Wellesley Hills,MA 02481